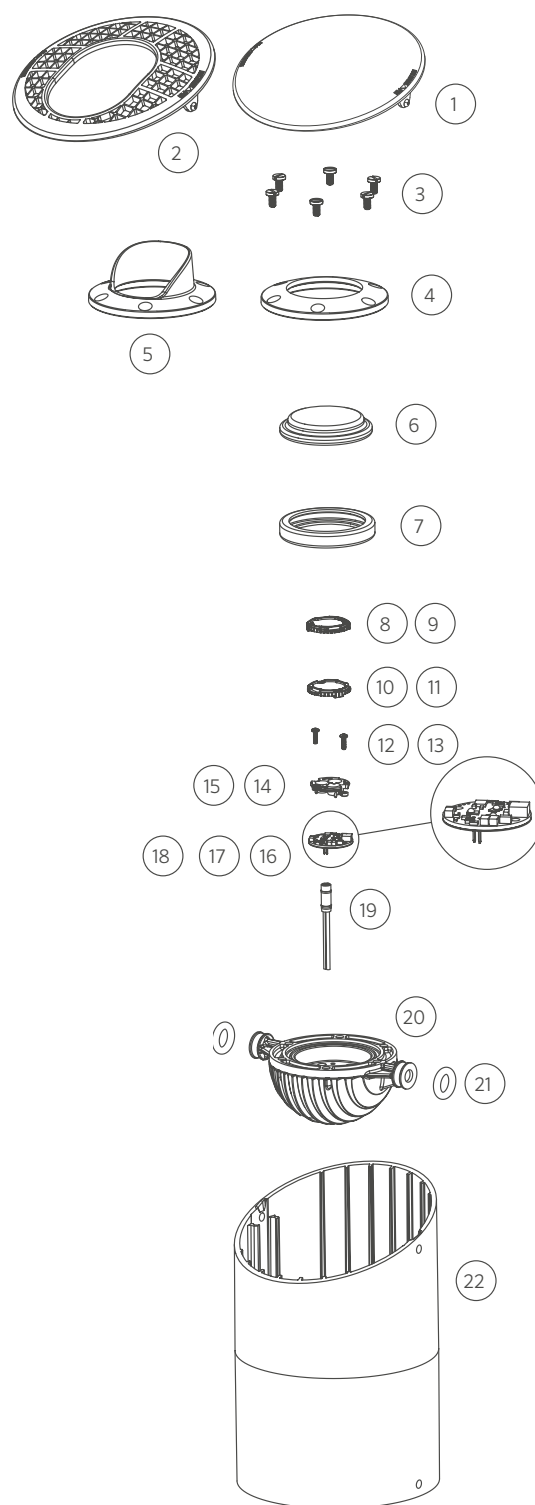


## PE LED

ITEM	DESCRIPTION	CATALOG #
1	Clear Cover	250019030000
2	Grid	760700
3	Screw, 10-24 x 3/8"	250015870000
4	Ring	250014330000
5	Cowling Optional	250014310000
6	Lens, Glass (Frosted)	250014240000 (250014240001)
7	Seal	250014250000
8-9	Beam Angle Lens	See LED Chart
10-11	Color Filter	See LED Chart
12-13	Screw, 4-40	See LED Chart
14-15	Reflector	See LED Chart
16-18	LED Board	See LED Chart
19	Socket, 3-meter	-
20	PE Housing	-
21	O-Ring	250010280007
22	Tube	250011630000
3-21	Replacement module, Ring	PE-Z-LED-RG-KIT
3-21	Replacement module, Cowling	PE-Z-LED-CW-KIT

## PE LED COMPONENTS

ITEM	DESCRIPTION	CATALOG #
8	3 LED Spot Lens (18°)	771300
8	3 LED Flood Lens (30°-32°)	3LEDFLENS
8	3 LED Wide Flood Lens (56°-58°)	3LEDWFLLENS
9	6/9 LED Spot Lens (18°)	771600
9	6/9 LED Flood Lens (30°-32°)	9LEDFLENS
9	6/9 LED Wide Flood Lens (56°-58°)	9LEDWFLLENS
10	3 LED Color Filter, Amber	770800
10	3 LED Color Filter, Blue	770801
10	3 LED Color Filter, Green	770802
11	6/9 LED Color Filter, Amber	771500
11	6/9 LED Color Filter, Blue	771501
11	6/9 LED Color Filter, Green	771502
12	3 LED Screw, 4-40 x 3/8" (Qty: 2)	762400
13	6/9 LED Screw, 4-40 x 7/16" (Qty: 3)	250014550000
14	3 LED Reflector	770700
15	6/9 LED Reflector	771400
15	ZDC LED Reflector	250020690000



ITEM	DESCRIPTION	CATALOG #
16	3 LED Board	3LEDULKIT*
17	6 LED Board	6LEDULKIT†
18	9 LED Board	9LEDULKIT†
18	ZDC LED Board	ZDCKITL**

\* ZD = zoneable and dimmable (add ZD to front of part number)

\*\* ZDC kit includes LED board, reflector (#14), screws (#13), and flood lens diffuser (9LEDFLENS)