

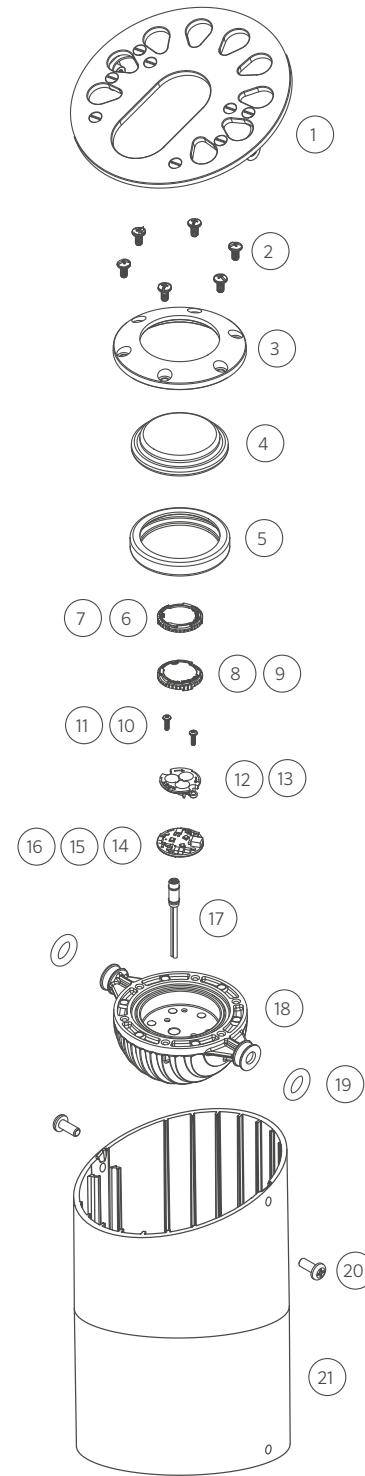
**KG LED**

ITEM	DESCRIPTION	CATALOG #
1	Faceplate Assembly	KGFPXX*
2	Screws, 10-24 x 3/8"	250011710000
3	Ring	250014330000
4	Glass Lens (Frosted)	250014240000 (250014240001)
5	Seal	250014170000
6-7	Beam Angle Lens	See LED Chart
8-9	Color Filter	See LED Chart
10-11	Screw	See LED Chart
12-13	Reflector	See LED Chart
14-16	LED Board	See LED Chart
17	Socket	-
18	Housing	-
19	O-Ring	250010280007
20	Screw, 10-24 x 5/8"	250011690017
21	Tube	250013980000
2-19	Replacement module, Ring	PE-Z-LED-RG-KIT

\* XX = powder coat color code

**KG LED COMPONENTS**

ITEM	DESCRIPTION	CATALOG #
6	3 LED Diffuser	771300
6	3 LED Flood Lens (30°-32°)	3LEDFLENS
6	3 LED Wide Flood Lens (56°-58°)	3LEDWFLENS
7	6/9 LED Diffuser	771600
7	6/9 LED Flood Lens (30°-32°)	9LEDFLENS
7	6/9 LED Wide Flood Lens (56°-58°)	9LEDWFLENS
8	3 LED Color Filter, Amber	770800
8	3 LED Color Filter, Blue	770801
8	3 LED Color Filter, Green	770802
9	6/9 LED Color Filter, Amber	771500
9	6/9 LED Color Filter, Blue	771501
9	6/9 LED Color Filter, Green	771502
10	3 LED Screw, 4-40 x 3/8" (Qty Req: 2)	762400
11	6/9 LED Screw, 4-40 x 7/16" (Qty Req: 3)	250014550000
12	3 LED Reflector	770700
13	6/9 LED Reflector	771400
13	ZDC LED Reflector	250020690000



14	3 LED Board	3LEDULKIT*
15	6 LED Board	6LEDULKIT†
16	9 LED Board	9LEDULKIT†
16	ZDC LED Board	ZDCKITL**

† ZD = zoneable and dimmable (add ZD to front of part number)

\*\* ZDC kit includes LED board, reflector (#12), screws (#11), and flood lens diffuser (9LEDFLENS)