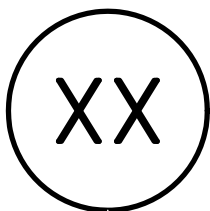
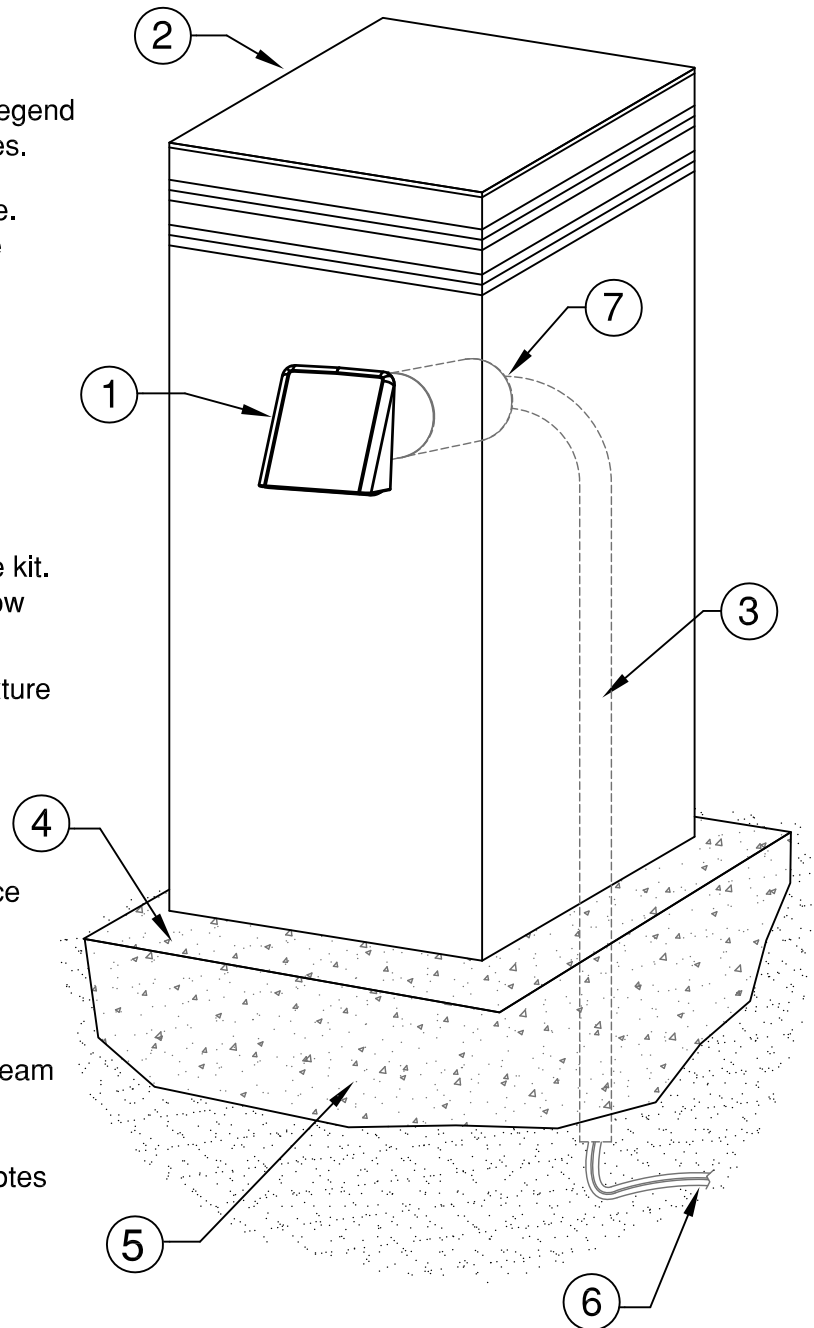


## DETAIL LEGEND

- ① FX Luminaire MO-WW fixture. See plan legend for wattage, beam spread and accessories.
- ② Square pedestal/bollard within landscape. See plans and landscape details for type of construction material.
- ③  $\frac{3}{4}$ " electrical conduit per local code.
- ④ Finished grade.
- ⑤ Concrete footing. Depth per local code.
- ⑥ Direct bury, UF/UL, copper, low voltage cable with 3M DBR/Y-6 direct bury splice kit. Leave 18" minimum wire loop coiled below fixture for service.
- ⑦ Use FX provided conduit included with fixture or standard 2" conduit.

## NOTES

- A. Installation to be completed in accordance with manufacturer's specifications.
- B. Accepts 10-15 volts - AC or DC
- C. See plan legend for LED board option, beam spreads, and accessories.
- D. Always refer to FX product installation notes prior to installation.



## MO-WW PATH LIGHT SQUARE PEDESTAL / BOLLARD

NOT TO SCALE