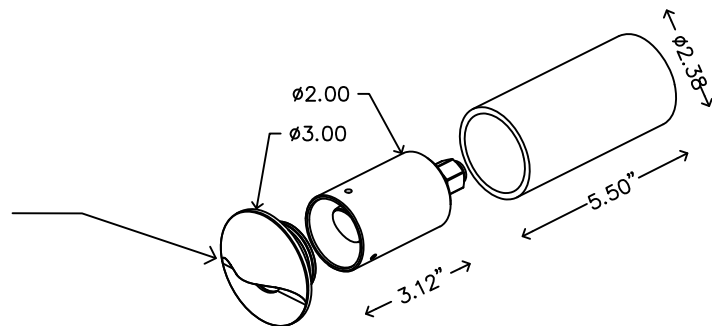


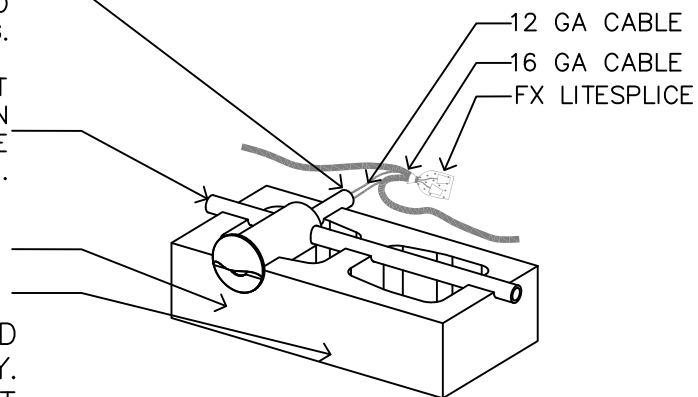
INSTALL FX LUMINAIRE CUSTODE GRADINO AS SHOWN USING 16 GAUGE CABLE AND PROVIDED WIRE NUTS. PLASTIC 2" DIA. EMT TUBING CAN BE DRILLED FOR 1/2" CONDUIT USING A 7/8" HOLE SAW.

FX LUMINAIRE CUSTODE GRADINO FIXTURE INCORPORATES A REMOVABLE CAP FOR LAMP REPLACEMENT, AND SOLID BRASS BODY THAT SLIDES INSIDE A 2" DIA. PLASTIC EMT SLEEVE (NOT SUPPLIED WITH PRODUCT) USED FOR PRE-INSTALLATION ALIGNMENT. THIS INSTALLATION MAKE ADJUSTMENTS TO THE WALL A PERFECT MATCH.



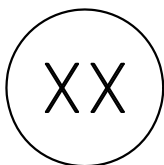
WATERPROOF SLEEVE END TO PREVENT WATER FROM SEEPING THROUGH THE WALL AND INTO THE LAMP HOUSING.

BLUE OR GRAY PLASTIC EMT CONDUIT WITH STRANDED THHN WIRE SIZED TO MATCH WATTAGE LOAD.



THIS FIXTURE IS DESIGNED FOR DOWN LIGHTING ONLY. DO NOT USE IN UP LIGHT POSITION.

SECTION/ELEVATION



CUSTODE GRADINO(CG) CONCRETE MOUNT

NOT TO SCALE

FX LUMINAIRE DETAIL