

STANDARD | SURFACE-MOUNTED WALL LIGHT | MS

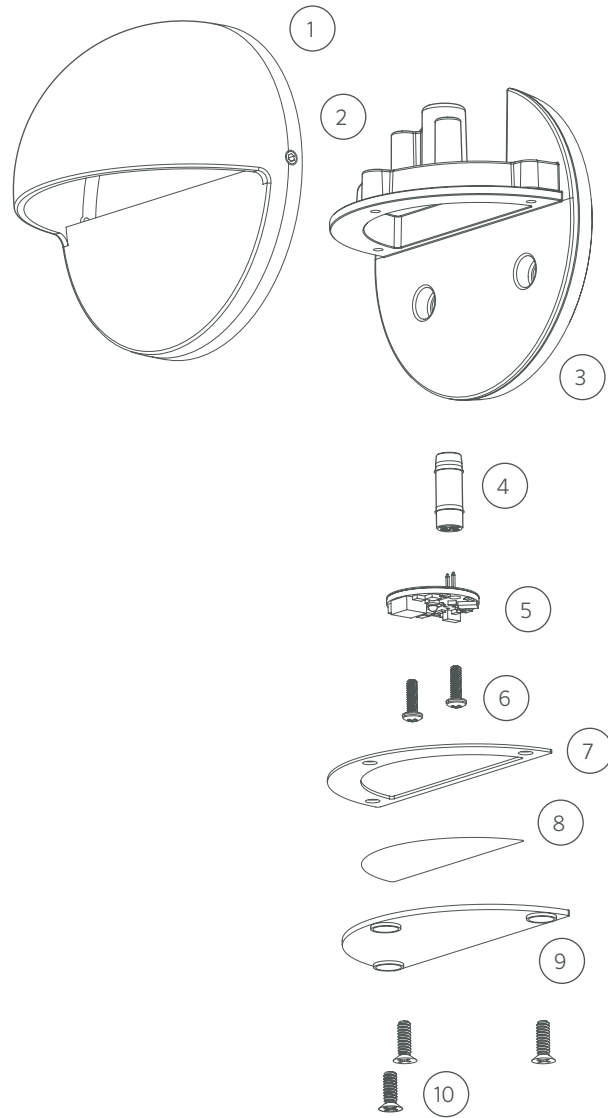
Replacement Parts

ITEM	DESCRIPTION	PART #	
1	Faceplate	†	
2	Screw, #8-32 x 1/8"	250010320000	
1-2	Faceplate and Screws	MS-FP-XX*	
3	Housing	†	
4	Socket, 10' (3 m)	752601	
5	LED Board	See LED Chart	
6	Screw, #4-40 x 3/8"	762400	
7	Gasket	250015520000	
8	Diffuser	†	
9	Lens	Clear	250015530000
		Amber	250015530001
10	Screw, #6-32 x 3/8"	250014810000	
NS	Hex Key, 5/64"	250010330000	

NS = Not shown

*XX = Finish code

† This part is not serviceable. Contact Customer Support or a local distributor to order a replacement product.



DESIGNER | ROUND BOARDS WITH BEAM ANGLE LENSES, 1 LED

2nd Gen LED Chart

DESCRIPTION	PART #
LED Replacement Kits (Board, Reflector, Screws, Beam Angle Lenses)	
1 LED Up Light Kit (2700K)	KIT-1LED-RD-W
ZD 1 LED Up Light Kit (2700K)	KIT-ZD-1LED-RD-W
Reflectors	
1 LED Reflector	770000
Screws	
1 LED/3 LED Screw, #4-40 x 3/8" (Qty Req: 2)	762400

Beam Angle Lens Chart

DESCRIPTION	PART #
Round Beam Angle Lenses	
1 LED Spot Lens (20°)	770600
1 LED Flood Lens (35°)	1LED-FL-LENS
1 LED Wide Flood Lens (60°)	1LED-WFL-LENS

1st Gen LED Chart

DESCRIPTION	PART #
LED Replacement Kits (Board, Reflector, Screws, Color Filters)	
1 LED Up Light Kit (3900K)	1LED-UL-KIT
ZD 1 LED Up Light Kit (3900K)	ZD-1LED-UL-KIT
Color Filter Lenses Only	
1 LED Color Filter, Amber	770100
1 LED Color Filter, Blue	770101
1 LED Color Filter, Green	770102
Optics Kits (Reflector, Screws, Color Filters)	
1 LED Optics Kit	1LED-OPTICS-KIT