

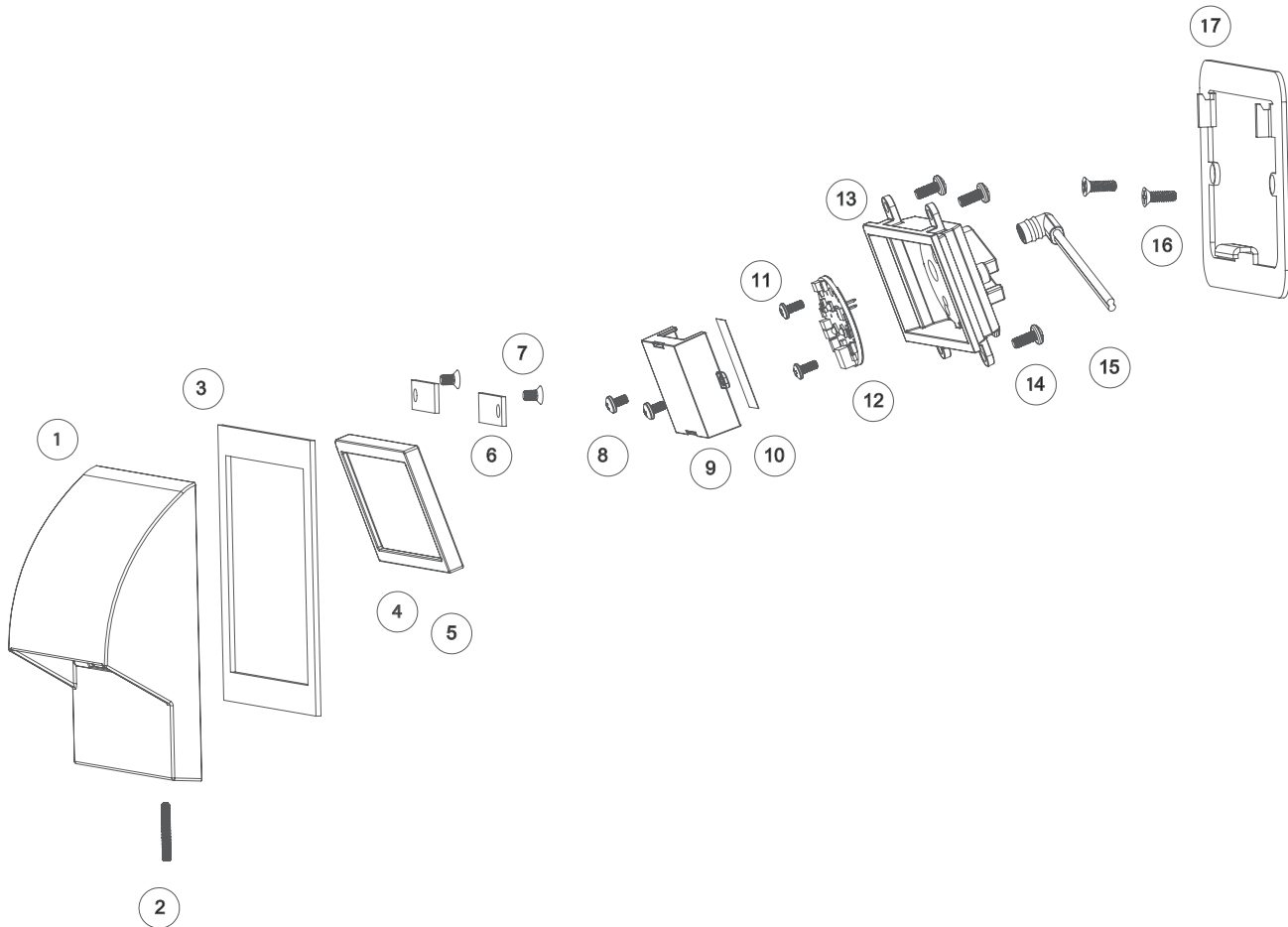
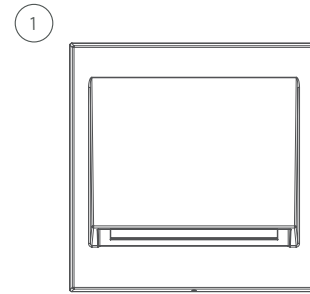
# DESIGNER | WALL LIGHT | SL5

## Replacement Parts

ITEM	DESCRIPTION	CATALOG #
1-3, 6-7	Faceplate Assembly, Curve	SL5FPCVXX*
	Faceplate Assembly, Flat	SL5FPFTXX*
8	Screws, M3 x 0.5 mm, 5 mm LG, Phil, SST	†
9, 10	Lens Assembly	SL5LENS
11	Screws, PH, 4-40 x ¼", Phil, SST	†
12	LED Board	See LED Chart
13	Housing	†
14	Screw, M3.5 x 0.6 mm, 6 mm, Phil, SST	†
15	90° Socket	†
16-17	Mounting Kit, Curve	MKSL5CV
	Mounting Kit, Flat	MKSL5FT

\* XX = Finish code

† This part is not serviceable. Contact Customer Support or a local distributor to order a new product.



## DESIGNER | WALL LIGHT | SL5

### LED Chart

ITEM	DESCRIPTION	CATALOG #
3	1 LED Spot Lens (18°)	770600
3	1 LED Flood Lens (30° to 32°)	1LEDFLENS
3	1 LED Wide Flood Lens (56° to 58°)	1LEDWFLENS
4	3 LED Spot Lens (18°)	771300
4	3 LED Flood Lens (30° to 32°)	3LEDFLENS
4	3 LED Wide Flood Lens (56° to 58°)	3LEDWFLENS
5	1 LED Color Filter, Amber	770100
5	1 LED Color Filter, Blue	770101
5	1 LED Color Filter, Green	770102
6	3 LED Color Filter, Amber	770800
6	3 LED Color Filter, Blue	770801
6	3 LED Color Filter, Green	770802
7	1 LED/3 LED Screw, #4-40 x 3/8" (Qty Req: 2)	762400
8	1 LED Reflector	770000
9	3 LED Reflector	770700
9	ZDC Reflector	250022050000
10	1 LED Board	1LEDULKIT <sup>†</sup>
11	3 LED Board	3LEDULKIT <sup>†</sup>
11	ZDC LED Board	ZDCKITM <sup>**</sup>

<sup>†</sup> ZD = Zoneable and dimmable (add ZD to front of part number)

<sup>\*\*</sup> ZDC Kit includes LED board, reflector (#9), screws (#7), and flood lens diffuser (3LEDWFLENS)