

DESIGNER | UP LIGHT | NR LED

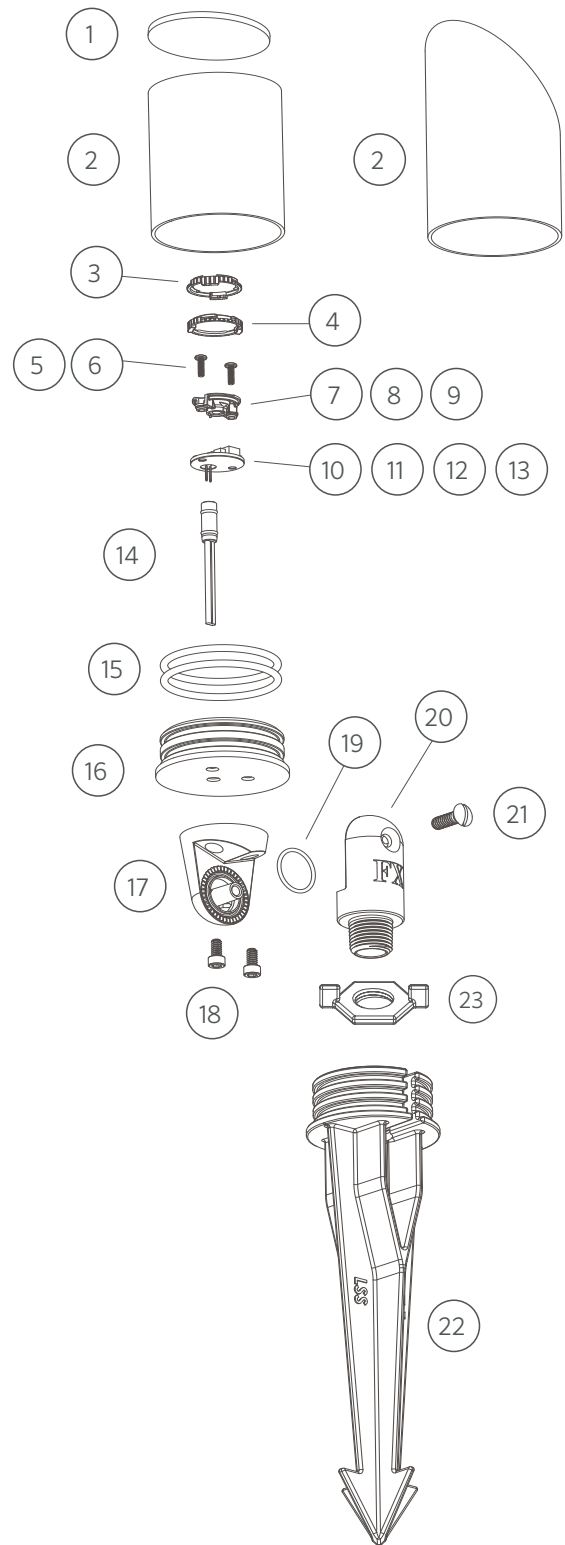
Replacement Parts

| ITEM | DESCRIPTION | CATALOG # |
|---------|-------------------------------------|------------------------|
| 1 | Lens | - |
| 2 | Shroud, Straight or Angled (Long) | - |
| 1-2, 15 | Lens Cap Assembly (Straight, Clear) | NRLCXX* ⁵ |
| 1-2, 15 | Lens Cap Assembly (Angled, Clear) | NRLCLSXX* ⁵ |
| 3 | Beam Angle Lens | See LED Chart |
| 4 | Color Filter | See LED Chart |
| 5-6 | Screw, #4-40 | See LED Chart |
| 7-9 | Reflector | See LED Chart |
| 10-13 | LED Board | See LED Chart |
| 14 | Socket, 3-meter | 752601 |
| 15 | O-Ring, Silicone, Orange | 250010280025 |
| 16 | Body, NR | † |
| 17 | Base, Knuckle, Brass | † |
| 18 | Screw, SCH, #10-24 x 3/8" | 250013940000 |
| 19 | O-Ring, Silicone, Orange | 250010280002 |
| 20 | Fitting, Knuckle, Brass | KFM050XX* |
| 21 | Screw, 1/4"-20 x 3/4" | 250010630000 |
| 22 | Long Slot Spike (LSS) | 250015840000 |
| 23 | Lock Ring | 250030410000 |

*XX = BS, CU, AB, AT, and NP finish codes only

⁵Replace "C" with "F" for frosted lens options

†This part is not serviceable. Contact Customer Support or a local distributor to order a new product.



LED Chart

| ITEM | DESCRIPTION | CATALOG # |
|------|---|------------------------|
| 3 | 1LED Spot Lens (18°) | 770600 |
| 3 | 1LED Flood Lens (30°-32°) | 1LEDFLENS |
| 3 | 1LED Wide Flood Lens (56°-58°) | 1LEDWFLENS |
| 3 | 3LED Spot Lens (18°) | 771300 |
| 3 | 3LED Flood Lens (30°-32°) | 3LEDFLENS |
| 3 | 3LED Wide Flood Lens (56°-58°) | 3LEDWFLENS |
| 3 | 6LED/9LED Spot Lens (18°) | 771600 |
| 3 | 9LED Flood Lens (30°-32°) | 9LEDFLENS |
| 3 | 9LED Wide Flood Lens (56°-58°) | 9LEDWFLENS |
| 4 | 1LED Color Filter, Amber | 770100 |
| 4 | 1LED Color Filter, Blue | 770101 |
| 4 | 1LED Color Filter, Green | 770102 |
| 4 | 3LED Color Filter, Amber | 770800 |
| 4 | 3LED Color Filter, Blue | 770801 |
| 4 | 3LED Color Filter, Green | 770802 |
| 4 | 6LED/9LED Color Filter, Amber | 771500 |
| 4 | 6LED/9LED Color Filter, Blue | 771501 |
| 4 | 6LED/9LED Color Filter, Green | 771502 |
| 5 | 1LED/3LED Screw, #4-40 x 3/8" (Qty: 2) | 762400 |
| 6 | 6LED/9LED Screw, #4-40 x 7/16" (Qty: 3) | 250014550000 |
| 7 | 1LED Reflector | 770000 |
| 8 | 3LED Reflector | 770700 |
| 9 | 6LED/9LED Reflector | 771400 |
| 9 | ZDC LED Reflector | 250020690000 |
| 10 | 1LED Board | 1LEDULKIT [‡] |
| 11 | 3LED Board | 3LEDULKIT [‡] |
| 12 | 6LED Board | 6LEDULKIT [‡] |
| 13 | 9LED Board | 9LEDULKIT [‡] |
| 13 | ZDC LED Board | ZDCKITL ^{**} |

[‡] ZD = Zoneable and dimmable (add ZD to front of part number)

^{**} ZDC kit includes LED board, reflector (#9), screws (#6), and flood lens diffuser (9LEDFLENS)