

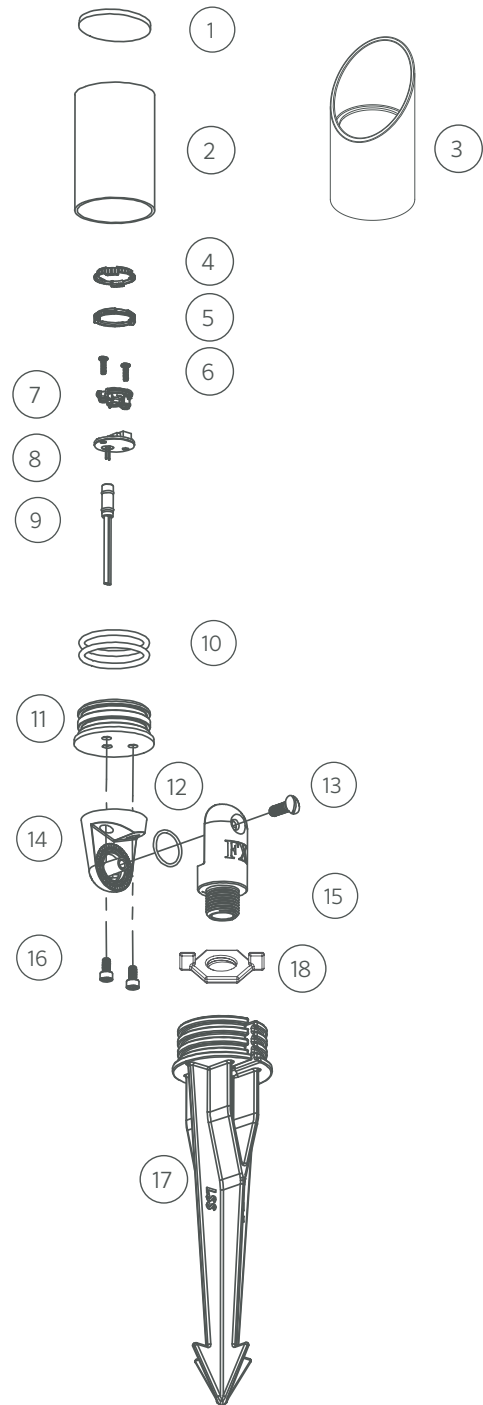
DESIGNER | UP LIGHT | FR LED

Replacement Parts

ITEM	DESCRIPTION	CATALOG #
1	Lens, Clear, 0.13" Thick x 1½" Diameter	-
1-2	Shroud Assembly, Straight	FRLCXX*
1, 3	Shroud Assembly, Long Shroud	FRLCLSXX*
4	Beam Angle Lens	See LED Chart
5	Color Filter	See LED Chart
6	Screw, PNH, #4-40 x ¾" LG, Mach, Phillips, SST	See LED Chart
7	Reflector	See LED Chart
8	LED Board	See LED Chart
9	Socket, 3-meter	752601
10	O-Ring	250010280017
11	Body, FR	†
12	O-Ring	250010280002
13	Screw, OVHD, ¼"-20 x ¾"	250010630000
14	Base, Knuckle, Brass	†
15	Fitting, Knuckle, Brass	KFM050XX*
16	Screw, SCH, #10-24 x ¾" LG, SST	250013940000
17	Long Slot Spike (LSS)	250015840000
18	Lock Ring	250030410000

*XX = BS, CU, AB, AT, and NP finish codes only

†This part is not serviceable. Contact Customer Support or a local distributor to order a new product.



LED Chart

ITEM	DESCRIPTION	CATALOG #
4	1LED Spot Lens (18°)	770600
4	1LED Flood Lens (30°-32°)	1LEDFLENS
4	1LED Wide Flood Lens (56°-58°)	1LEDWFLENS
4	3LED Spot Lens (18°)	771300
4	3LED Flood Lens (30°-32°)	3LEDFLENS
4	3LED Wide Flood Lens (56°-58°)	3LEDWFLENS
5	1LED Color Filter, Amber	770100
5	1LED Color Filter, Blue	770101
5	1LED Color Filter, Green	770102
5	3LED Color Filter, Amber	770800
5	3LED Color Filter, Blue	770801
5	3LED Color Filter, Green	770802
6	1LED/3LED Screw, 4-40 x 3/8" (Qty Req: 2)	762400
7	1LED Reflector	770000
7	3LED Reflector	770700
7	ZDC Reflector	250022050000
8	1LED Board	1LEDULKIT [‡]
8	3LED Board	3LEDULKIT [‡]
8	ZD 3LEDT Amber LED Board	ZD3LEDTKIT
8	ZDC LED Board	ZDCKITM ^{**}

[‡] ZD = Zoneable and dimmable (add ZD to front of part number)

^{**} ZDC kit includes LED board, reflector (#9), screws (#7), and flood lens diffuser (3LEDWFLENS)