

PATH LIGHT | RUNA RP-33

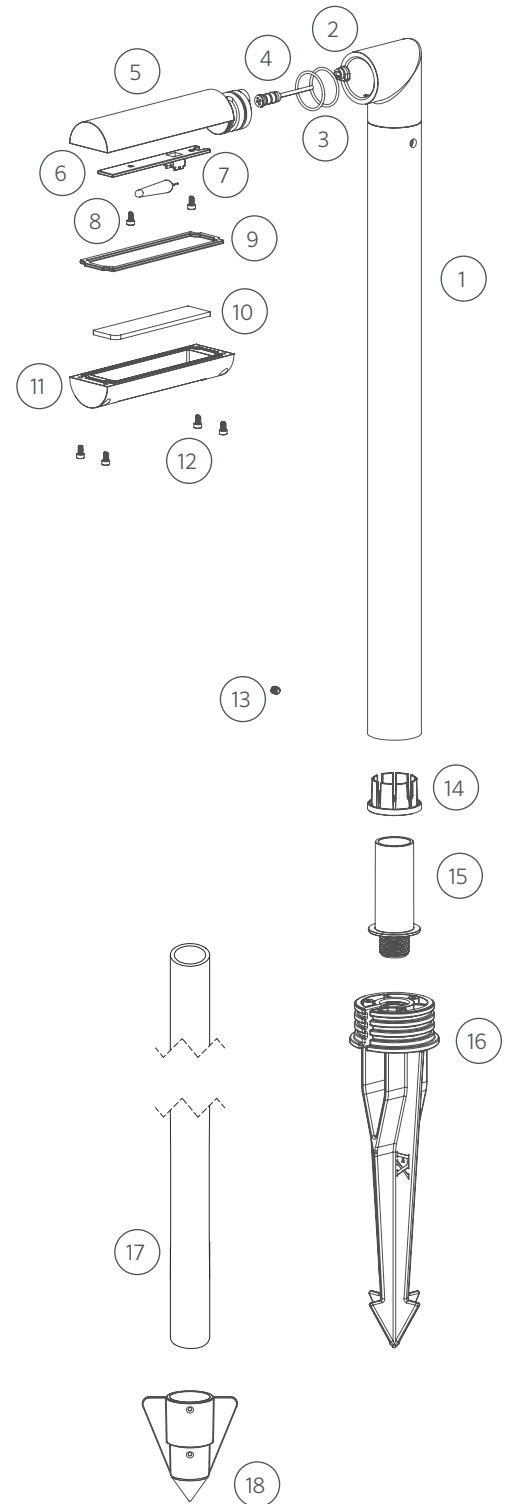
Replacement Parts

| ITEM | DESCRIPTION | PART # |
|-------|---|----------------|
| 1 | Riser Subassembly | † |
| 2 | Cable Alignment Plug | 250035510000 |
| 3 | O-Ring for Body | 250010280052 |
| 4 | Socket, 10' (3 m) | 754601 |
| 5 | Body | † |
| 6 | Reflector | 250035400000 |
| 7 | Lamp, G4 | See Lamp Chart |
| 8 | Screw, M3 x 0.5 mm, 6 mm | 250035370000 |
| 9 | Gasket | 250035440000 |
| 10 | Lens | 250035430000 |
| 11 | Faceplate | † |
| 12 | Screw, M3 x 0.5 mm, 6 mm | 250035370000 |
| 9-12 | Faceplate Assembly | RP32-LF-XX* |
| 13 | Screw, M5 x 0.8 mm, 6 mm | 250035880000 |
| 14 | Centering Collet | 250037780000SP |
| 15 | Adapter, 3/4" Schedule 40 to 1/2"-14 NPSM | 250035490000SP |
| 16 | Large Slot Spike | 250015840000 |
| 17 | Conduit Stake, 3/4" (19 mm) Schedule 40 | 250028770000 |
| 18 | Conduit Stabilizer | † |
| 17-18 | Kit with Stabilizer, 3/4" (19 mm) PVC | CS-KIT-MPJ |
| NS | Hex Key, 2.5 mm | 250038350000 |
| NS | Deck Mount | RP32-DM-XX* |

NS = Not shown

*XX = Finish code

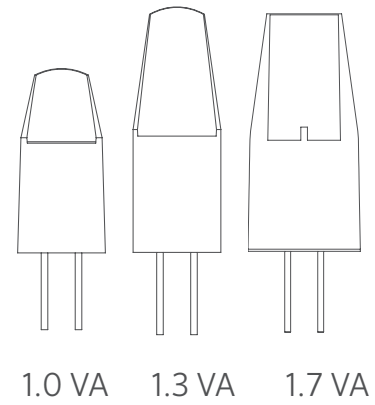
† This part is not serviceable. Contact Customer Support or a local distributor to order a replacement product.



LAMPS | G4 LAMPS

G4 LED Lamp Chart

| LUMENS / VA | CCT | PART # |
|-----------------|-------|----------|
| 1.0 VA / 85 lm | 2700K | G4-E-1-W |
| 1.3 VA / 145 lm | 2700K | G4-E-2-W |
| 1.7 VA / 195 lm | 2700K | G4-E-3-W |
| 1.0 VA / 90 lm | 3000K | G4-E-1-S |
| 1.3 VA / 150 lm | 3000K | G4-E-2-S |
| 1.7 VA / 200 lm | 3000K | G4-E-3-S |



fxl.com/G4