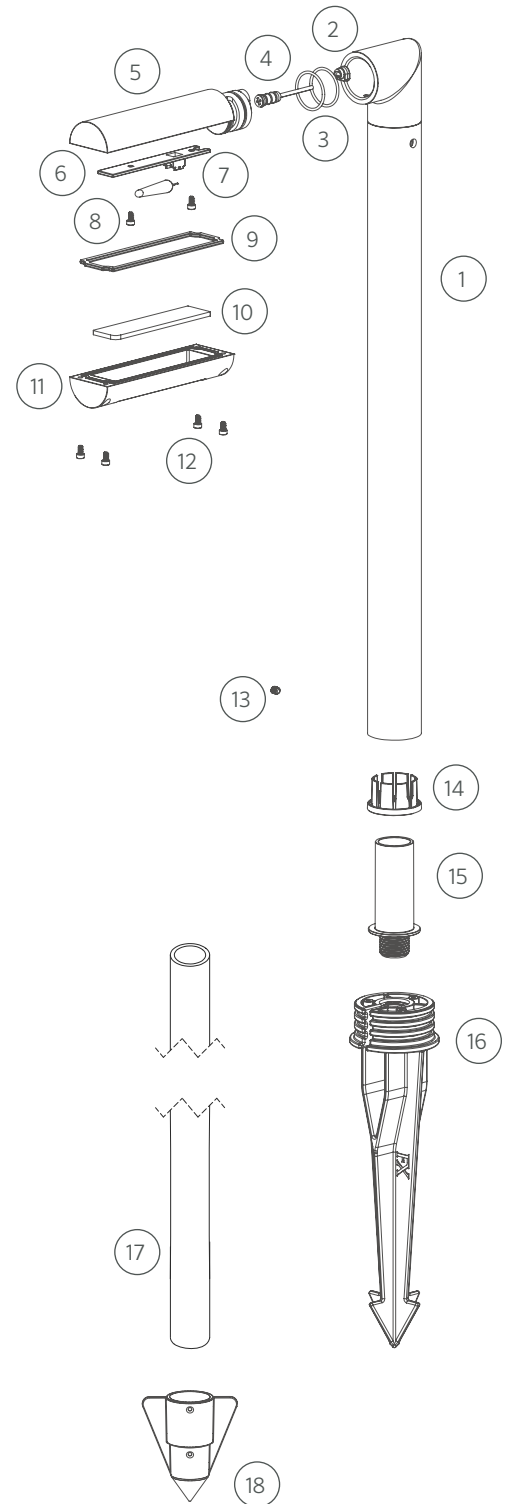


STANDARD | PATH LIGHTS | RUNA RP-33 PETITE PATH LIGHT

Replacement Parts

ITEM	DESCRIPTION	PART #
1	Riser Subassembly	†
2	Cable Alignment Plug	250035510000
3	O-Ring for Body	250010280052
4	Socket, 10' (3 m)	754601
5	Body	†
6	Reflector	250035400000
7	Lamp, G4	See Lamp Chart
8	Screw, M3 x 0.5 mm, 6 mm	250035370000
9	Gasket	250035440000
10	Lens	250035430000
11	Faceplate	†
12	Screw, M3 x 0.5 mm, 6 mm	250035370000
9-12	Faceplate Assembly	RP32-LF-XX*
13	Screw, M5 x 0.8 mm, 6 mm	250035880000
14	Centering Collet	250037780000
15	Adapter, 3/4" Schedule 40 to 1/2"-14 NPSM	250035490000
16	Large Slot Spike	250015840000
17	Conduit Stake, 3/4" (19 mm) SCH 40	250028770000
18	Conduit Stabilizer	†
17-18	Kit with Stabilizer, 3/4" (19 mm) PVC	CS-KIT-MPJ
NS	Hex Key, 2.5 mm	250038350000
NS	Deck Mount	RP32-DM-XX*



NS = Not shown

*XX = Finish code

† This part is not serviceable. Contact Customer Support or a local distributor to order a replacement product.

LAMPS | G4 LAMPS

G4 LED Lamp Chart

LUMENS / VA	CCT	PART #
76 lm / 1.1 VA	2700K	G4-LED-10-W
123 lm / 1.7 VA	2700K	G4-LED-20-W
170 lm / 2.6 VA	2700K	G4-LED-35-W
76 lm / 1.1 VA	3000K	G4-LED-10-S
123 lm / 1.7 VA	3000K	G4-LED-20-S
170 lm / 2.6 VA	3000K	G4-LED-35-S

