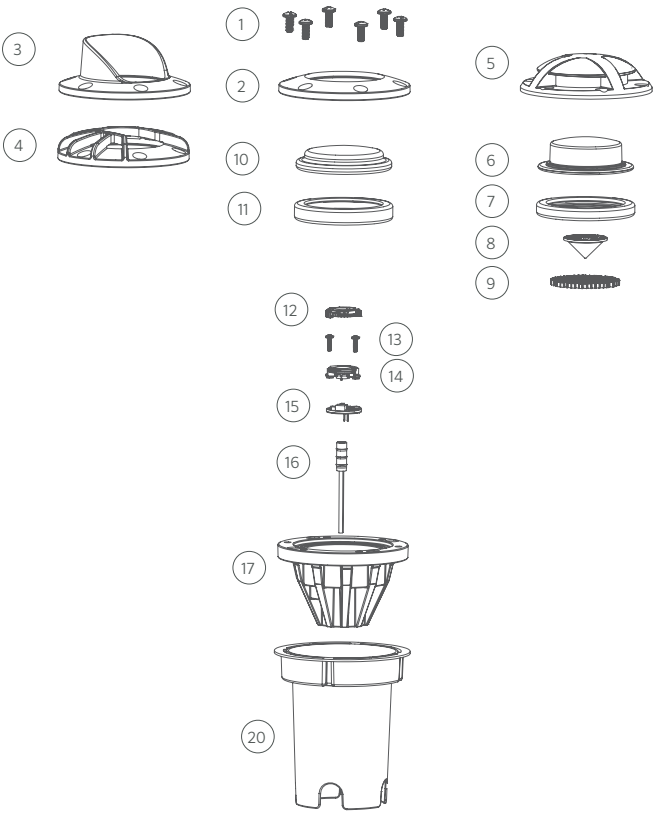


Replacement Parts

ITEM	DESCRIPTION		PART #
1	Screw, #10-24 x 3/8"		250015870000
2	Faceplate	Ring	FC-FP-RG-XX*-
3		Cowling	FC-FP-CW-XX*
4		Louver	FC-FP-LV-XX*
5		Ground Wash	FC-FP-GW-ZZZ*-XX*
6	Lens, Ground Wash		250021960000
7	Seal, Ground Wash		250021970000
8	Upper Reflector		771000
9	Hex Baffle, 2" (50 mm)		250015260000
10	Lens	Clear	250014240000
		Frosted	250014240001
11	Seal, Ring/Cowling/Louver		250014250000
12	Beam Angle Lens		See LED Chart
13	Screw		See LED Chart
14	Reflector		See LED Chart
15	LED Board		See LED Chart
16	Socket, 10' (3 m)		†
17	Body		†
18‡	Screw, #6 x 1½" (Qty. 4)		250013060000
19‡	Construction Cover		250026950000
20	Outer Housing		250014260000
18-20	Mounting Kit		FCSLEEVEASSY

* XX = Finish code
* ZZZ = Orientation code (090, 180, 270, 360)
† This part is not serviceable. Contact Customer Support or a local distributor to order a new product.
‡ Not shown in diagram



DESIGNER | ROUND BOARDS WITH BEAM ANGLE LENSES, 1/3/6/9 LED

2nd Gen LED Chart

DESCRIPTION	PART #
LED Replacement Kits (Board, Reflector, Screws, Beam Angle Lenses)	
1 LED Up Light Kit (2700K)	KIT-1LED-RD-W
3 LED Up Light Kit (2700K)	KIT-3LED-RD-W
6 LED Up Light Kit (2700K)	KIT-6LED-RD-W
9 LED Up Light Kit (2700K)	KIT-9LED-RD-W
ZD 1 LED Up Light Kit (2700K)	KIT-ZD-1LED-RD-W
ZD 3 LED Up Light Kit (2700K)	KIT-ZD-3LED-RD-W
ZD 6 LED Up Light Kit (2700K)	KIT-ZD-6LED-RD-W
ZD 9 LED Up Light Kit (2700K)	KIT-ZD-9LED-RD-W
ZDC 3 LED Kit, Medium	ZDC-KITM
ZDC 3 LED Kit, Large	ZDC-KITL
Reflectors	
1 LED Reflector	770000
3 LED Reflector	770700
6 LED/9 LED Reflector	771400
ZDC 3 LED Reflector, Medium	250022050000
ZDC 3 LED Reflector, Large	250020690000
Screws	
1 LED/3 LED Screw, #4-40 x 3/8" (Qty Req: 2)	762400
6 LED/9 LED Screw, #4-40 x 7/16" (Qty Req: 3)	250014550000

Beam Angle Lens Chart

DESCRIPTION	PART #
Round Beam Angle Lenses	
1 LED Spot Lens (20°)	770600
1 LED Flood Lens (35°)	1LED-FL-LENS
1 LED Wide Flood Lens (60°)	1LED-WFL-LENS
3 LED Spot Lens (20°)	771300
3 LED Flood Lens (35°)	3LED-FL-LENS
3 LED Wide Flood Lens (60°)	3LED-WFL-LENS
6 LED/9 LED Spot Lens (20°)	771600
6 LED/9 LED Flood Lens (35°)	9LED-FL-LENS
6 LED/9 LED Wide Flood Lens (60°)	9LED-WFL-LENS

1st Gen LED Chart

DESCRIPTION	PART #
LED Replacement Kits (Board, Color Filters, Reflector, Screws)	
1 LED Up Light Kit (3900K)	1LED-UL-KIT
3 LED Up Light Kit (3900K)	3LED-UL-KIT
6 LED Up Light Kit (3900K)	6LED-UL-KIT
9 LED Up Light Kit (3900K)	9LED-UL-KIT
ZD 1 LED Up Light Kit (3900K)	ZD-1LED-UL-KIT
ZD 3 LED Up Light Kit (3900K)	ZD-3LED-UL-KIT
ZD 3 LED T Up Light Kit (TURTLE)	ZD-3LED-T-KIT
ZD 6 LED Up Light Kit (3900K)	ZD-6LED-UL-KIT
ZD 9 LED Up Light Kit (3900K)	ZD-9LED-UL-KIT
Color Filter Lenses Only	
1 LED Color Filter, Amber	770100
1 LED Color Filter, Blue	770101
1 LED Color Filter, Green	770102
3 LED Color Filter, Amber	770800
3 LED Color Filter, Blue	770801
3 LED Color Filter, Green	770802
6 LED/9 LED Color Filter, Amber	771500
6 LED/9 LED Color Filter, Blue	771501
6 LED/9 LED Color Filter, Green	771502
Optics Kits (Color Filters, Reflector, Screws)	
1 LED Optics Kit	1LED-OPTICS-KIT
3 LED Optics Kit	3LED-OPTICS-KIT
6 LED/9 LED Optics Kit	9LED-OPTICS-KIT