

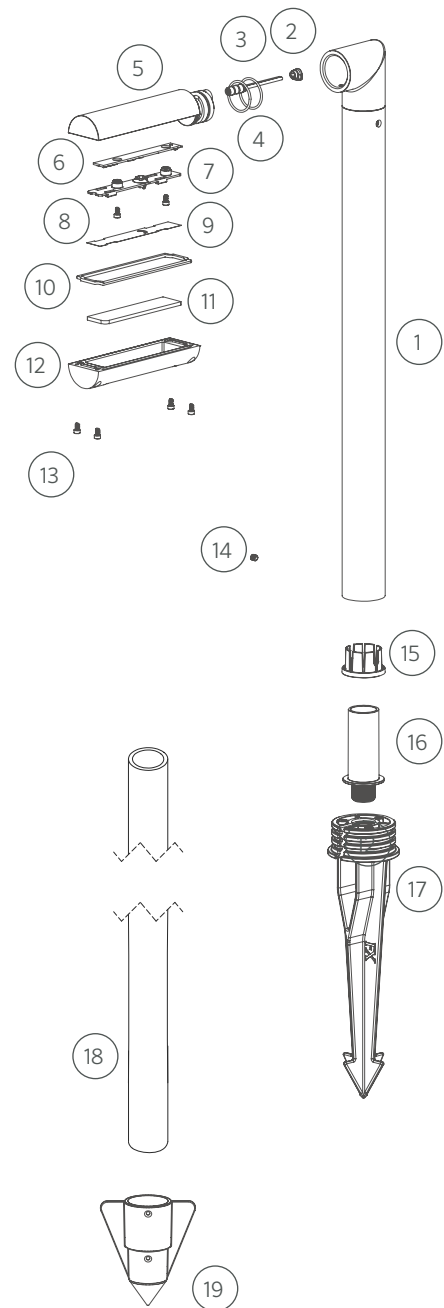
Replacement Parts

ITEM	DESCRIPTION	PART #
1	Riser Subassembly	†
2	Cable Alignment Plug	250035510000
3	Socket, 10' (3 m)	752601
4	O-Ring for Body	250010280052
5	Body	†
6	LED Board	See LED Chart
7	Reflector	250035410000
8	Screw, M3 x 0.5 mm, 6 mm	250035500000
9	Diffuser	250035420000
10	Gasket	250035440000
11	Lens	250035430000
12	Faceplate	†
13	Screw, M3 x 0.5 mm, 6 mm	250035500000
10-13	Faceplate Assembly	RP32-LF-XX*
14	Screw, M5 x 0.8 mm, 6 mm	250035580000
15	Centering Collet	250037780000
16	Adapter, 3/4" Schedule 40 to 1/2"-14 NPSM	250035490000
17	Large Slot Spike	250015840000
18	Conduit Stake, 3/4" Schedule 40	250028770000
19	Conduit Stabilizer	†
18-19	Conduit Stabilizer Kit	CS-KIT-MPJ
NS	Hex Key, 2.5 mm	250038350000

NS = Not shown

\*XX = Finish code

† This part is not serviceable. Contact Customer Support or a local distributor to order a replacement product.



## DESIGNER | RECTANGULAR LED BOARD REPLACEMENT

---

### LED Chart

DESCRIPTION	PART #
1 LED (2700K), Horizontal Pin	755903**
1 LED, (3000K), Horizontal Pin	755907**
1 LED (3900K), Horizontal Pin	755907**
1 LED, Zoning/Dimming (2700K)	755905**
1 LED, Zoning/Dimming (3900K)	755908**
1 LED, Zoning/Dimming (3000K)	755908**
1 LED, Zoning/Dimming (TURTLE)	755909**
ZDC Linear Board, Horizontal Pins, Amber	ZDC-KIT-R**

*\*\*Includes LED board only*