

# PATH LIGHT | MODERN MP-30

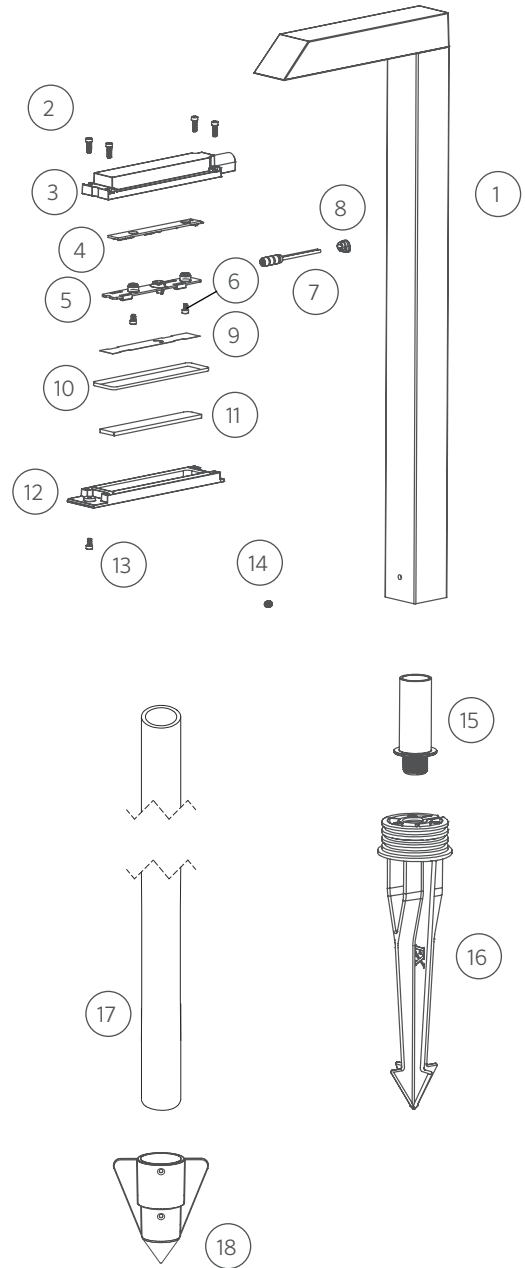
## Replacement Parts

ITEM	DESCRIPTION	PART #
1	Riser/Housing Assembly	†
2	Screw, M3 x 0.5 mm, 10 mm	250035360000
3	Housing, Top	†
4	LED Board	See LED Chart
5	Reflector	250035410000
6	Screw, M3 x 0.5 mm, 5 mm	250035380000
7	Socket, 10' (3 m)	752601
8	Cable Alignment Plug	250035510000
9	Diffuser	250015840000
10	Gasket	250035330000
11	Lens	250035340000
12	Housing, Bottom	†
13	Screw, M3 x 0.5 mm, 6 mm	250035500000
10-13	Faceplate Assembly	MP30-LF-XX*
14	Screw, M5 x 0.8 mm, 6 mm	250035880000
15	Adapter, ¾" Schedule 40 to ½"-14 NPSM	250035490000SP
16	Large Slot Spike	250015840000
17	Conduit Stake, ¾" Schedule 40	†
18	Conduit Stabilizer	†
17-18	Conduit and Stabilizer Kit	CS-KIT-MPJ
NS	Hex Key, 2.5 mm	250038350000

NS = Not shown

\*XX = Finish code

† This part is not serviceable. Contact Customer Support or a local distributor to order a replacement product.



# RECTANGULAR LED BOARD REPLACEMENT

## LED Chart

DESCRIPTION	PART #
1 LED (2700K)	DKIT-1LED-W-LN-BD**
1 LED (3000K)	DKIT-1LED-S-LN-BD**
1 LED (4000K)	DKIT-1LED-C-LN-BD**
ZD 1 LED, Zoning/Dimming (2700K)	DKIT-ZD-1LED-W-LN-BD**
ZD 1 LED, Zoning/Dimming (3000K)	DKIT-ZD-1LED-S-LN-BD**
ZD 1 LED, Zoning/Dimming (4000K)	DKIT-ZD-1LED-C-LN-BD**
ZD 1 LED, Zoning/Dimming (TURTLE)	DKIT-ZD-1LED-T-LN-BD**
ZDC (RGBW)	DKIT-ZDC-1LED-RGBW-LN-BD**

\*\*LED board only, no optics