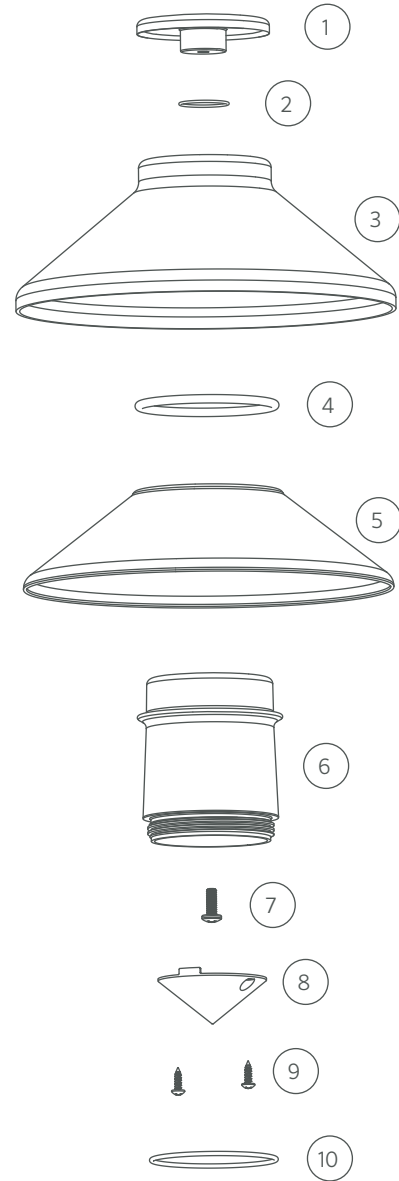


DESIGNER | PATH LIGHT | JS

Top Assembly Replacement Parts

ITEM	DESCRIPTION	CATALOG #
1	Cap, Brass	2500133300XX*
2	O-Ring	250010280001
3	Top, Copper	-
4	O-Ring	250010280011
5	Reflector, White	755000
6	Lens	753300
7	Screw, #8-32 x 7/16"	750103
8	Reflector, Chrome	-
9	Screw, #4 x 3/8"	-
10	O-Ring	250010280032
8-9	Grande Cone Kit	GCONEKIT

* XX = Powder coat color code

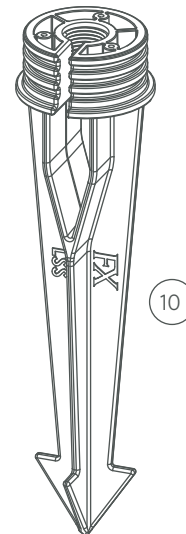
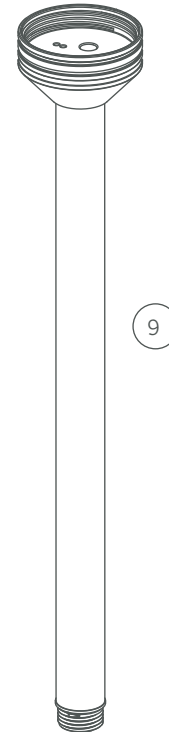
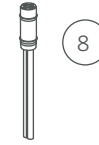


Replacement Parts

ITEM	DESCRIPTION	CATALOG #
1-2	Color Filter	See LED Chart
3	Screw	See LED Chart
4-5	Reflector	See LED Chart
6-7	LED Board	See LED Chart
8	Socket, 3-meter	752601
9	Riser Assembly	-
10	Long Slot Spike (LSS)	250015840000

*XX = Powder coat color code

OBSOLETE PARTS



G-RA Lamp Replacement

ITEM	DESCRIPTION	CATALOG #
1	1 LED Color Filter, Amber	770100
1	1 LED Color Filter, Blue	770101
1	1 LED Color Filter, Green	770102
2	3 LED Color Filter, Amber	770800
2	3 LED Color Filter, Blue	770801
2	3 LED Color Filter, Green	770802
3	Screw, #4-40 x 3/8" (Qty Req: 2)	762400
4	1 LED Board	1LEDULKIT [‡]
5	3 LED Board	3LEDULKIT [‡]
5	ZD 3 LEDT Amber LED Board	ZD3LEDTKIT
5	ZDC LED Board	ZDCKITM ^{**}
6	1 LED Reflector	770000
7	3 LED Reflector	770700
7	ZDC LED Reflector	250022050000
11	Upper Reflector 1 LED	770300
12	Reflector Support 1 LED	770200
13	Upper Reflector 3 LED	771000
14	Reflector Support 3 LED	770900

[‡] ZD = Zoneable and dimmable (add ZD to front of part number)

^{**} ZDC kit includes LED board, ZDC reflector, screws, and flood lens diffuser (3LEDFLENS)