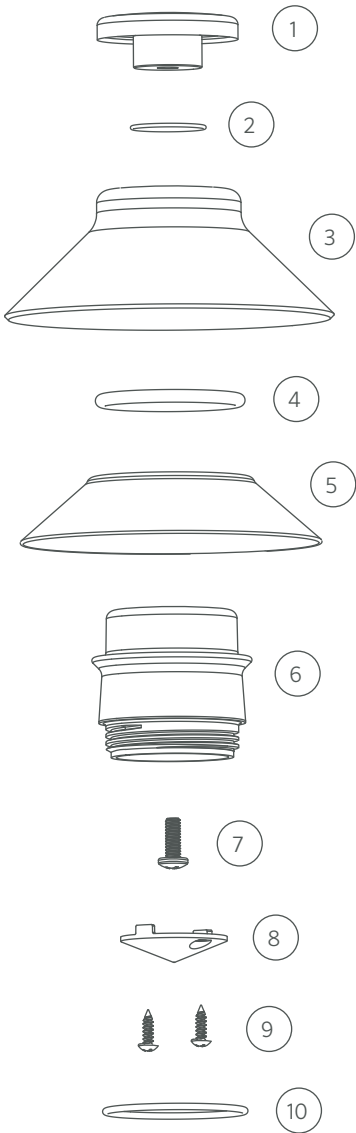


Replacement Parts

ITEM	DESCRIPTION	PART #
1	Cap, Brass	2500118000XX*
2	O-Ring for Cap	250010280001
3	Top	†
4	O-Ring for Top	250010280010
5	Reflector	756200
6	Lens	753000
7	Screw, #8-32 x 7/16"	750103
8	Reflector	†
9	Screw, #4 x 3/8"	†
8-9	Petite Cone Kit	PCONEKIT
10	O-Ring for Lens	250010280033

*XX = Finish code

† = This part is not serviceable. Contact Customer Support or a local distributor to order a replacement product.



Replacement Parts

ITEM	DESCRIPTION	PART #
1	Screw	See LED Chart
2	Reflector	See LED Chart
3	LED Board	See LED Chart
4	Socket, 10' (3 m)	752601
5	Riser Assembly	†
6	Large Slot Spike	250015840000

† This part is not serviceable. Contact Customer Support or a local distributor to order a new product.

1st Gen LED Chart

DESCRIPTION	PART #
LED Replacement Kits (Board, Color Filters, Reflector, Screws)	
1 LED Up Light Kit (3900K)	1LED-UL-KIT
ZD 1 LED Up Light Kit (3900K)	ZD-1LED-UL-KIT
Reflectors	
1 LED Reflector	770000
Screws	
1 LED/3 LED Screw, #4-40 x 3/8" (Qty Req: 2)	762400
Color Filter Lenses Only	
1 LED Color Filter, Amber	770100
1 LED Color Filter, Blue	770101
1 LED Color Filter, Green	770102
Optics Kits (Color Filters, Reflector, Screws)	
1 LED Optics Kit	1LED-OPTICS-KIT

2nd Gen LED Chart

DESCRIPTION	PART #
LED Replacement Kits (Board, Reflector, Screws, Beam Angle Lenses)	
1 LED Up Light Kit (2700K)	KIT-1LED-RD-W
ZD 1 LED Up Light Kit (2700K)	KIT-ZD-1LED-RD-W
Reflectors	
1 LED Reflector	770000
Screws	
1 LED/3 LED Screw, #4-40 x 3/8" (Qty Req: 2)	762400

