

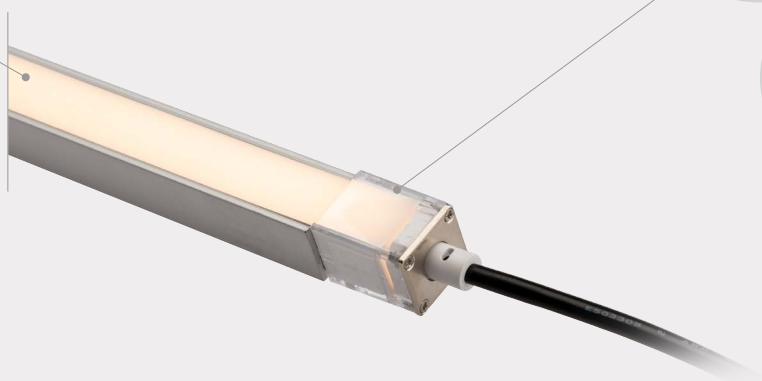
SRP Strip Light

STANDARD PLUS

KEY BENEFITS

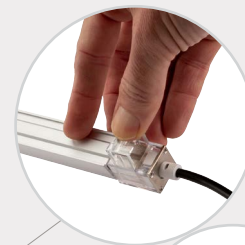
Robust and Versatile Strip Lighting

Silicone-encased LEDs deliver a soft, diffused light distribution for top performance in a range of applications.



Quick and Secure IP65 Connections

It's easy to make all needed connections during installation — with no heat shrink or adhesive required!



Installation Accessories Included

All required splice connection accessories and termination caps are included with every purchase. The SRP Strip Light comes preinstalled with a 3 m power feed for a seamless installation experience.



FXLuminaire®

WHEN DESIGNING

Challenge: Most strip lights generate bright hot spots because the LEDs are designed without a diffuser. Some products offer a diffuser accessory, while others don't.

Solution: The frosted silicone design of the SRP Strip Light provides a soft, even light distribution without the need for additional costly accessories.



WHEN INSTALLING

Challenge: Most strip lights are complicated to install, requiring many steps to make splice and termination connections. Each connection needs heat shrink or adhesive to remain secure.

Solution: SRP Strip Light jumper and closed-end connectors are fully preassembled and included with every purchase. Installation is fast and efficient with only three simple steps required: Insert, slide, and snap!



STRIP LIGHT COMPARISON

FEATURES	SRP Strip Light	Competitor 1	Competitor 2	Competitor 3
Input Voltage	12 VAC	12 VAC	12 VDC*	24 VDC*
Power Consumption (VA)	2.2 W	2.7 W	12 W	34 W
Max. Run Length	12 m	12 m	10 m	4.9 m
IP Rating	IP65	IP65	IP67	Not Available
Connection Method	Mechanical (Heat Shrink Not Required)	Heat Shrink and Silicone Adhesive	Mechanical and Silicone Adhesive	Silicone Adhesive
Splice Connection Accessories	Included (Jumper, End Caps, Mounting Clips)	Sold Separately	Included (End Caps, Power Feed, Mounting Clips)	Sold Separately
Power Feed	3 m Included	Sold Separately	1.8 m Included	Sold Separately
Diffuser Accessories	Built-in	Sold Separately	Not Available	Not Available

*DC power supply required