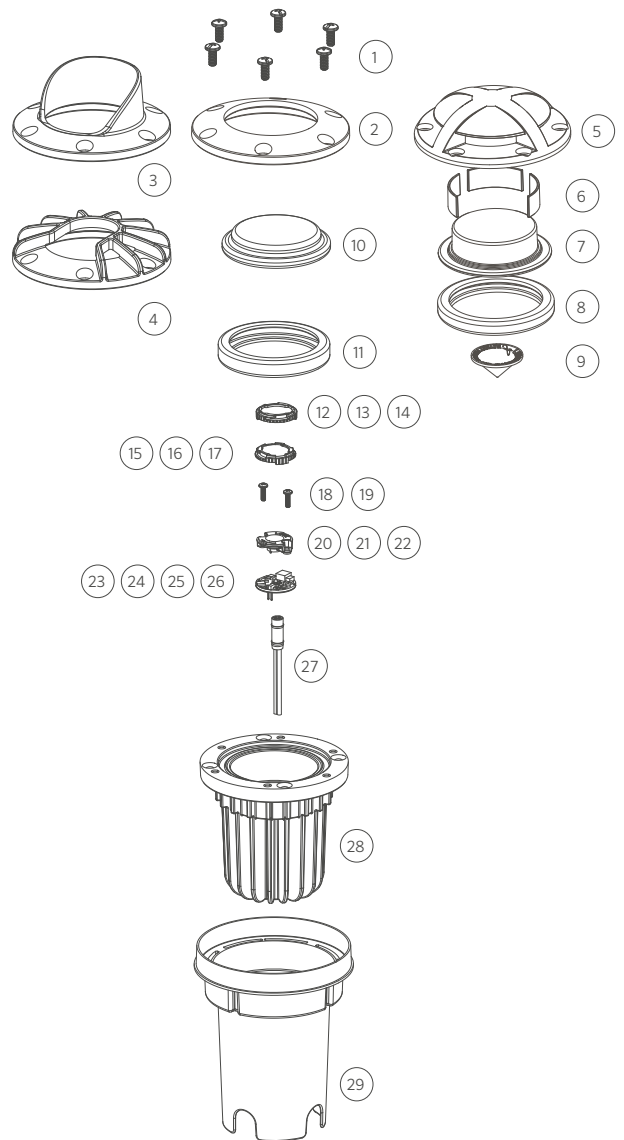


FC LED

ITEM	DESCRIPTION	CATALOG #
1	Screw, 10-24 x 7/16"	250019470000
Faceplate Option:		
2	Ring	FCFPRGXX*
3	Cowling	FCFPCWXX*
4	Louver	FCFPLVXX*
5	Ground Wash	FCFPGW-ZZZ-XX*
6	FC Light Shroud	250021980000
7	Ground Wash Lens	250021960000
8	Black Silicone Seal	250021970000
9	Upper Reflector	771000
10	Glass Lens (Frosted)	250014240000 (250014240001)
11	Lens Seal	250014250000
12-14	Beam Angle Lenses	See LED Chart
15-17	Color Filter	See LED Chart
18, 19	Screw, 4-40	See LED Chart
20-22	Reflector	See LED Chart
23-26	LED Board	See LED Chart
27	Socket, 3-meter	-
28	Housing	-
29	Outer Housing	250014260000

*XX = powder coat color code

**FC LED COMPONENTS**

ITEM	DESCRIPTION	CATALOG #
17	1 LED Board	1LEDULKIT [†]
18	3 LED Board	3LEDULKIT*
19	6 LED Board	6LEDULKIT [†]
20	9 LED Board	9LEDULKIT [†]
20	ZDC LED Board	ZDCKITL**
21	1 LED Reflector	770000
22	3 LED Reflector	770700
23	6/9 LED Reflector	771400
23	ZDC LED Reflector	250020690000
24	1/3 LED Screw, 4-40 x 3/8" (Qty: 2)	762400
25	6/9 LED Screw, 4-40 x 7/16" (Qty: 3)	250014550000
26	1 LED Color Filter, Amber	770100
26	1 LED Color Filter, Blue	770101

26	1 LED Color Filter, Green	770102
27	3 LED Color Filter, Amber	770800
27	3 LED Color Filter, Blue	770801
27	3 LED Color Filter, Green	770802
28	6/9 LED Color Filter, Amber	771500
28	6/9 LED Color Filter, Blue	771501
28	6/9 LED Color Filter, Green	771502
29	1 LED Spot Lens (18°)	770600
29	1 LED Flood Lens (30°-32°)	1LEDFLLENS
29	1 LED Wide Flood Lens (56°-58°)	1LEDWFLLENS
29	3 LED Spot Lens (18°)	771300
29	3 LED Flood Lens (30°-32°)	3LEDFLLENS
29	3 LED Wide Flood Lens (56°-58°)	3LEDWFLLENS
29	6/9 LED Spot Lens (18°)	771600

[†] ZD = zoneable and dimmable (add ZD to front of part number)

** ZDC kit includes LED board, reflector (#17), screws (#20), and flood lens diffuser (9LEDFLLENS)