

[illegible]

CONTENTS

- LUXOR CRESTRON INTEGRATION3
- OVERVIEW3
- CRESTRON REQUIREMENTS.....3
- LUXOR REQUIREMENTS.....3
- SIMPL WINDOWS SOFTWARE4
- OPEN THE SIMPL PROGRAM4
- LUXOR MODULE INPUTS.....4
- LUXOR MODULE OUTPUTS5
- LUXOR CONTROLLER.....7
- FIND LUXOR IP.....7
- TROUBLESHOOTING10

LUXOR Crestron Integration

Overview

This specification describes the Luxor Crestron SIMPL module to use with Luxor lighting controllers. The Luxor module allows the Crestron controller to turn on and off Luxor Groups and Themes in addition to getting the state of all named Luxor Groups and Themes.

Crestron Requirements

The Crestron controller is required to be programmed with the SIMPL Windows software. The Luxor module will need to be added to the SIMPL Windows Program in the Program View in the Logic folder. The Luxor module and Luxor SIMPL+ module will need to be located in the same folder as the SIMPL program. The Luxor module works with any Ethernet enabled processor.

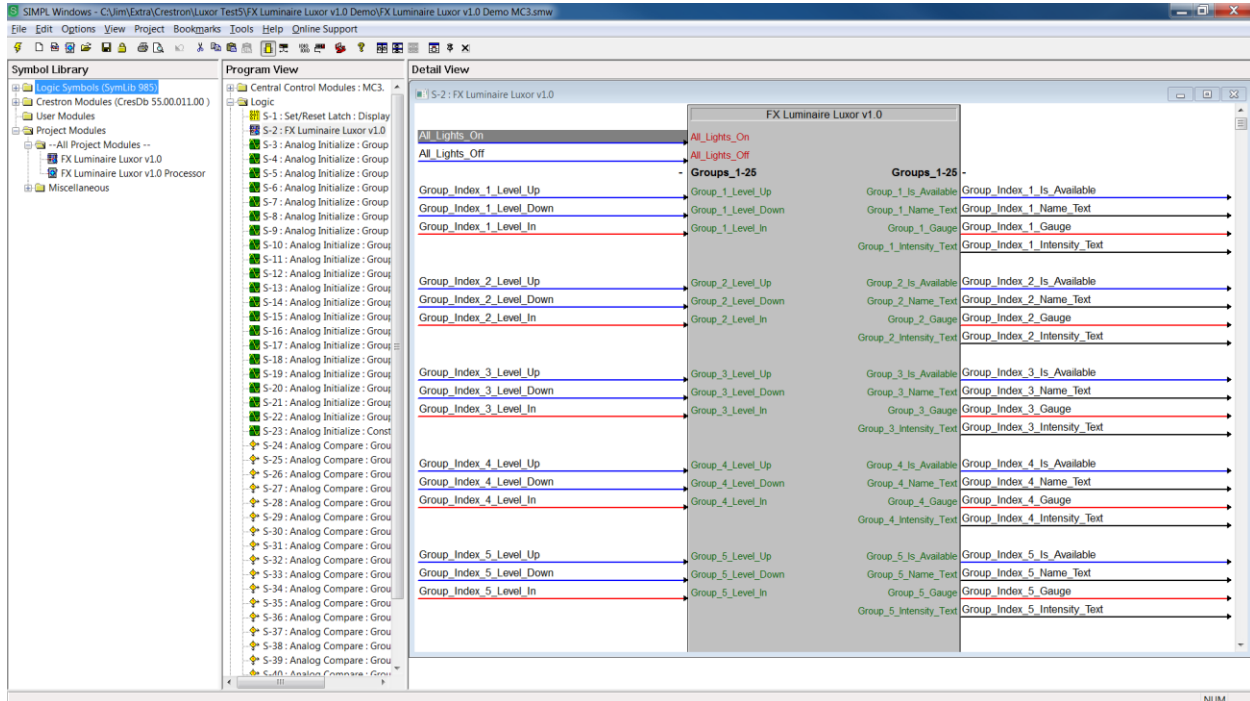
Luxor Requirements

The Luxor module is designed for both the Luxor ZD and Luxor ZDC. The Luxor controllers need to be connected to the same router as the Crestron control system. The router needs to have the DHCP Reservation setup so that each Luxor controller has an IP Address reserved for it. Luxor Themes will be setup in the Luxor Facepack or FXLuminaire App. Theme names and Group names are setup in the FXLuminaire App. For the Luxor ZDC, the color of the groups are setup in the Luxor Facepack or FXLuminaire App.

SIMPL Windows Software

Open the SIMPL Program

Open the SIMPL Program on the computer that communicates with the Crestron control system. An example of a SIMPL Program is shown below:



Add the Luxor module to the Logic folder. Open the Detail View on the module.

Luxor Module Inputs

Controller 1-5 IP Address: Enter in the IP addresses of the Luxor controllers you want to control at the very bottom of the Luxor Module (Set all unused IP addresses to 0). The IP address of a Luxor can be found on the Luxor Facepack (See Find Luxor IP in the Luxor Controller section). The Port number is automatically configure to 80.

All_Lights_On: Turns on all Groups on all the Luxor controllers to 75%.

All_Lights_Off: Turns off all Groups on all the Luxor controllers.

Group_XXX_Level_Up: Ramps up the light level on group XXX (1 to 250) from the current light level up to a maximum of 100%. Ramps from 0 to 100% in 5 seconds as long as the input is active.

Group_XXX_Level_Down: Ramps down the light level on group XXX (1 to 250) from the current light level down to a minimum of 0%. Ramps from 100 to 0% in 5 seconds as long as the input is active.

Group_XXX_Level_In: Sets the light level on group XXX (1 to 250) from the current light level to the value of Group_XXX_Level_In (0 to 100%).

Theme_XX_On: Turns on Theme XX (1 to 26 (corresponding to Theme A to Z)).

Theme_XX_Off: Turns off Theme XX (1 to 26 (corresponding to Theme A to Z)).

Theme_XX_Toggle: Toggles Theme XX (1 to 26 (corresponding to A to Z)) on and off.

Poll_Enable: A value of 1 enables an automatic sending of Poll Groups and Poll Themes alternating every 5 minutes. A value of 0 turns off this feature.

Poll_Groups: Retrieves the latest information on the state of the named Groups.

Poll_Themes: Retrieves the latest information on the state of the named Themes.

Note: Delay 1 second in between turning on or off different groups or themes or polling groups or themes.

Luxor Module Outputs

Group_XXX_Is_Available: If the Group has been named then Group_XXX_Is_Available is 1. If there is no name associated with the Group then Group_XXX_Is_Available is 0. Only available groups will have feedback when a Poll_Groups is issued. All non-available groups' information will be set to 0 when a Poll_Groups is issued.

Group_XXX_Name_Text: This corresponds to the name given that Group in the FXLuminaire App.

Group_XXX_Gauge: This value is updated when using Group_XXX_Level_Up or Group_XXX_Level_Down. This value has a range of 0 to 65536 corresponding to a light output of 0 to 100% of that group.

Group_XXX_Intensity_Text: This value corresponds to the light intensity of that Group, 0 to 100%. For example, if Group_2_Intensity_Text is 50% that means Group 2 is set to 50% light intensity.

Theme_XX_Is_Available: If the Theme has been named then Theme_XX_Is_Available is 1. If there is no name associated with the Theme then Theme_XX_Is_Available is 0. Only available themes will have feedback when a Poll_Themes is issued. All non-available themes' information will be set to 0 when a Poll_Themes is issued. Non-available themes cannot be toggled.

Theme_XX_Name_Text: This corresponds to the name given that Theme in the FXLuminaire App.

Theme_XX_Is_On: If the Theme is on or has been set to turn on then Theme_XX_Is_On is 1, otherwise it is 0.

Theme_XX_Is_Off: If the Theme is off or has been set to turn off then Theme_XX_Is_Off is 1, otherwise it is 0.

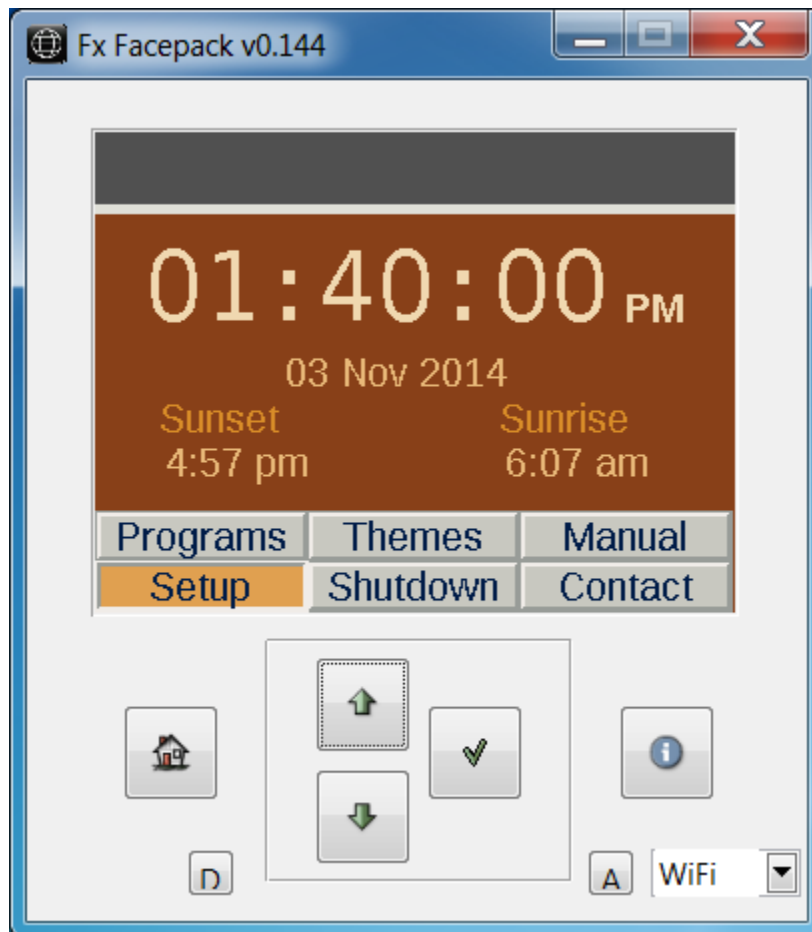
Status_Text: This contains the message status response from the Luxor controller which can be set to: OK, Command Not Found, Bad JSON Format, JSON item is not an integer, Color Value Out of Range, Item not found, Duplicate item, Item does not exist, Bad Group Number, Bad theme Index, Theme Changes Restricted.

Note: Any response other than OK, means that there was an error with the communication with the Luxor controller.

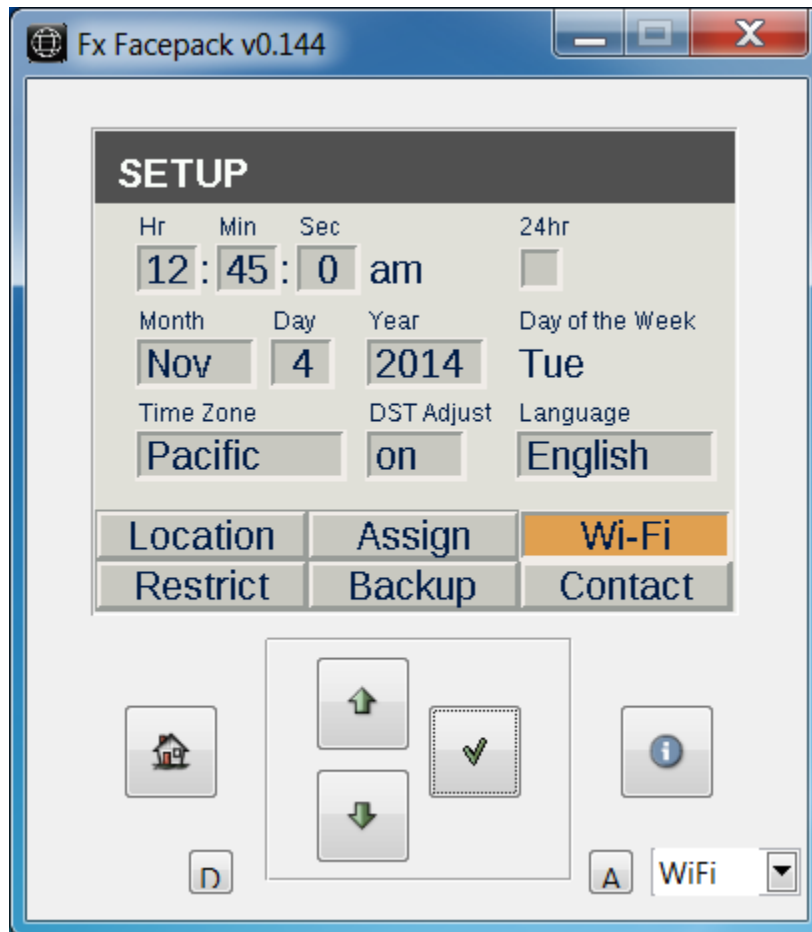
Luxor Controller

Find Luxor IP

To find the Luxor IP go to the home screen of the Luxor controller and select Setup:



On the Setup screen, select Wi-Fi (or LAN if you have a wired connection):



On the Wi-Fi Setup screen, verify that the Luxor controller is connected to the router that is connected to the Crestron controller and record the IP address. Also verify that if there are multiple Luxor controllers that they have different Controller IDs.



Troubleshooting

Group or Theme does not turn on:

Double check the IP Address of the Luxor controller and verify it is entered in correctly in the Luxor module in the SIMPL Windows program. Also try turning on the Group or Theme using the FXLuminaire App. For basic functionality try turning it on using the Luxor Facepack.

Note: The router needs to have the DHCP Reservation setup so that each Luxor controller has an IP Address reserved for it.

Theme turns on and off but does not toggle:

Verify that the Theme has been named. An unnamed Theme cannot be toggled.

Incorrect or No Feedback on Group or Theme:

Verify that the Group or Theme has a name. Unnamed Groups or Themes will have their feedback set to 0.