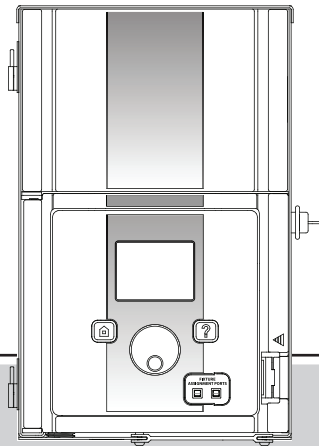


# Lutron HomeworksQS Integration Guide

Luxor<sup>®</sup> controllers with ZD Technology<sup>™</sup> and ZDC Technology<sup>™</sup>

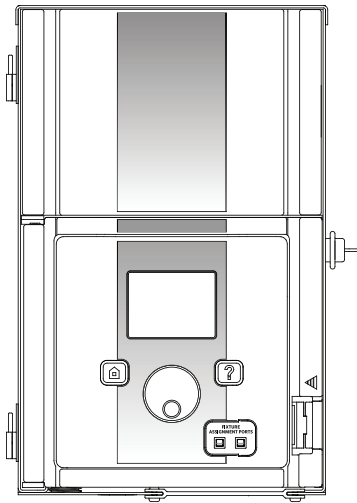


*Lighting Accessories by Hunter Industries*

# Table of Contents

---

- 3 System Requirements**
- 4 Creating Project**
- 6 Add Devices**
- 9 Link Assignments**
- 10 Edit Integration ID's**
- 11 Telnet Logins**
- 12 Program Keypads**
- 13 Transfer Project**
- 14 Configure Luxor Controller**
- 16 Enable Lutron**
- 17 Troubleshooting**



# System Requirements

---

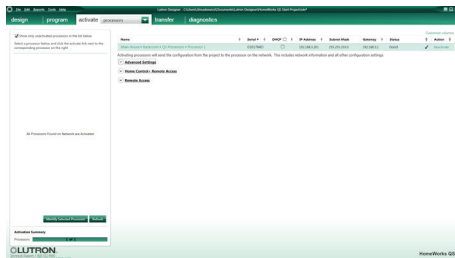
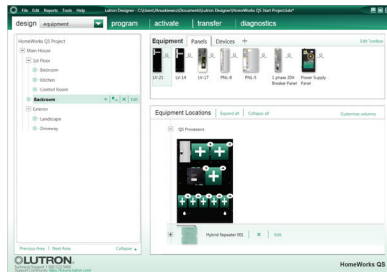
## **Lutron HomeworksQS Requirements**

Software - Homeworks QS

# Getting Started

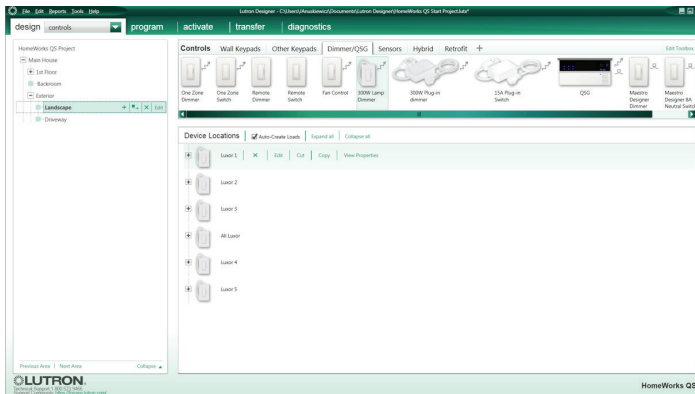
## Creating Project

1. Name project
2. Go Activate tab
3. Select processors in drop down box.
4. Uncheck "DHCP" box.
5. Record processor IP address



# Getting Started

6. In Design tab, select Controls from drop down box
7. Press "+" next to Exterior to add location

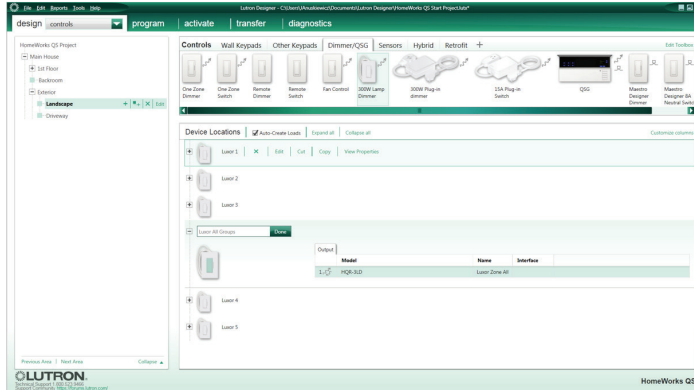


**Note:** Location name should correspond to Luxor location (front yard, backyard, etc.)

# Adding Devices

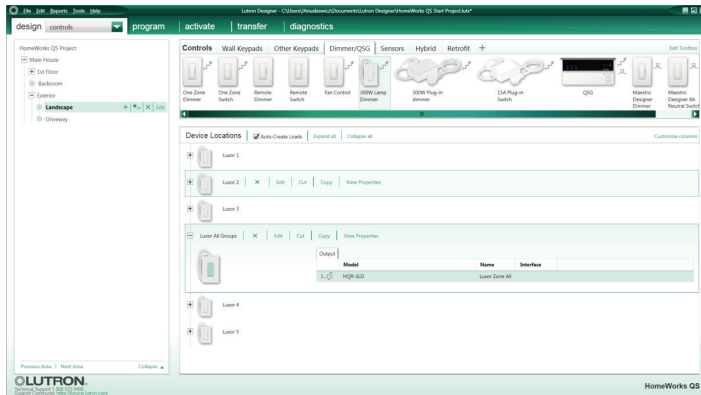
## Adding Devices

1. In Controls section, select Dimmer/QSG tab
2. Click "+" to add HQR-3LD 300W Lamp Dimmer



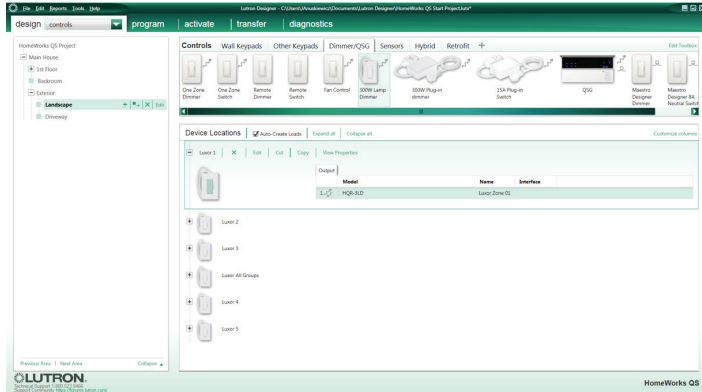
# Adding Devices

3. Enter "Luxor All Groups" in Device Location field
4. Enter "Luxor Zone All" in zone name field
5. Click Done



# Adding Devices

6. For device named Luxor All Groups, click "+"
  7. Add HQR-3LD 300W Dimmer to Luxor All Groups device
  8. Enter "Luxor1" in Device Location field
  9. Enter "Luxor Zone 01" in zone name field
  10. Click Done
- Repeat steps 6-10 until a device has been added for all available Luxor Groups

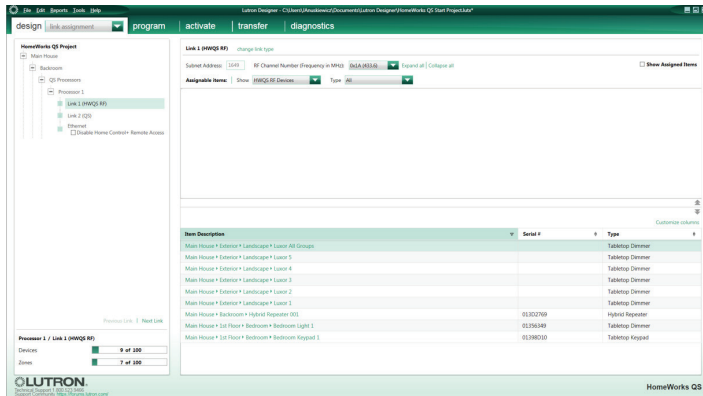




# Link Assignments

## Link Assignments

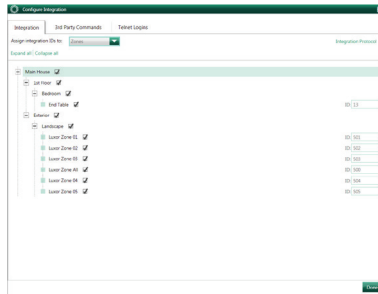
1. Confirm all Luxor groups have been added as a device
2. In design tab, select "link assignment" from drop down box
3. Assign Link to Luxor Group devices



# HomeworksQS Software

## Edit Integration IDs

1. In menu bar, select Tools and click Configure Integration
2. Select Zones in "Assign integration IDs to" drop down box
3. Double click ID field for "Luxor Zone All" group and enter 500
4. Double click ID field for "Luxor Zone 01" group and enter 501
5. Edit ID numbers for remaining Luxor Groups
6. Click Done

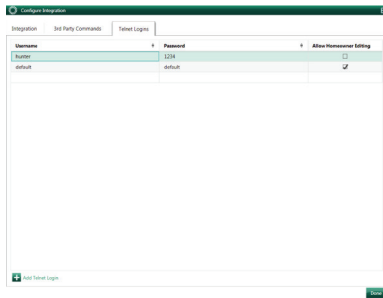


# Telnet Logins

## Telnet Logins

1. From menu bar, select Tools and click Configure Integration
2. In Configuration Integration menu, elect Telnet Logins
3. Click "+ Add Telnet Login" located at the bottom of the screen
4. Enter "hunter" in Username field
5. Enter "1234" in Password field
6. Uncheck "Allow Homeowner Editing" box

**Note:** "Bad Login" error message will be displayed if Username and Password are not named "hunter" and "1234"



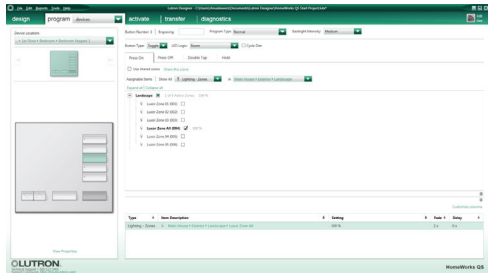
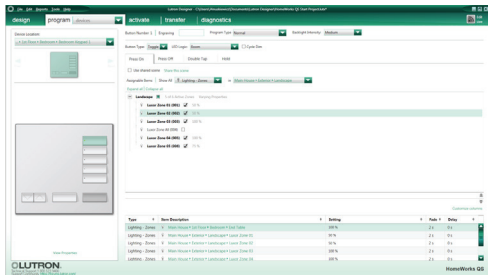
# Program Keypads

## Program Keypads

1. From Program tab, select keypad to control Luxor Groups
2. Select location of devices
3. Select Keypad button
4. Select "Luxor Groups" to be controlled by Keypad button
5. Set dimmer level

Repeat steps 3-5, until all Luxor Groups have been assigned to the Keypad

**Note:** Default levels remain unchanged for Fade and Delay



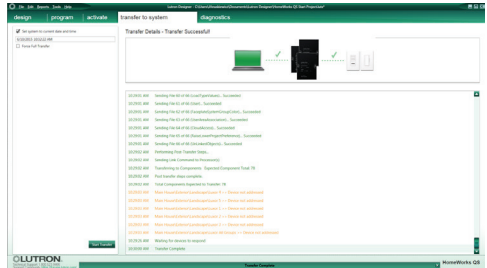
# Transfer Project

## Transfer Project

1. In transfer tab, click "Start Transfer" button.
2. Transfer complete
3. Configure Luxor - Page 14, 15

**Note:** Ignore all "Device not addressed warnings".  
Luxor Group devices do not need to be activated since they are used as placeholders

If additional Luxor Groups and devices are added in the future, then project must be retransferred

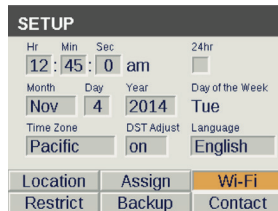
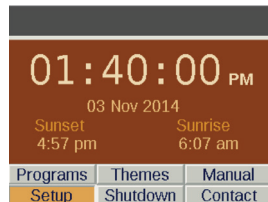


# Luxor Configuration

---

## Configure Luxor Controller

1. From Luxor home screen, select Setup
2. Select Wi-Fi (or LAN for hardwire connection)



# Luxor Configuration

---

3. Verify router connection
4. Select Lutron
5. Enter Lutron IP address.

**Note:** IP Address can be found on main repeater (Page 4)

6. Enter 500 in Integration ID Start # field



**Wi-Fi Setup**

WiFi: Direct Connect Ready

Network  
luxor Network

IP Address 192.168.3.100

Controller ID

Lutron



**Wi-Fi Lutron Setup**

Lutron Enabled

Lutron: Not Connected

Lutron IP 192 . 168 . 3 . 201

Integration ID Start # should be 400 to 700

Integration ID Start #  5  0  0

Back

# Luxor Configuration

---

## Enable Lutron

7. Select "Lutron Enabled" box

**Note:** Luxor controller will attempt to connect if Lutron system is running

8. Confirm "Connected to Lutron"





# Troubleshooting

---

## Connection Error

If Luxor fails to connect, then verify Lutron IP address is correct



## "Bad Login" Message

"Bad Login" error message occurs when Lutron login username and password do not match "hunter" and "1234". Refer to page 11 - Telnet Logins

If changes are made, then project will need to be transferred again. Refer to page 13 - Project Transfer



---

**HUNTER INDUSTRIES**

1940 Diamond Street, San Marcos, California 92078 USA  
[corporate.hunterindustries.com](http://corporate.hunterindustries.com)

LP-002-IG-HQS US 7/16