

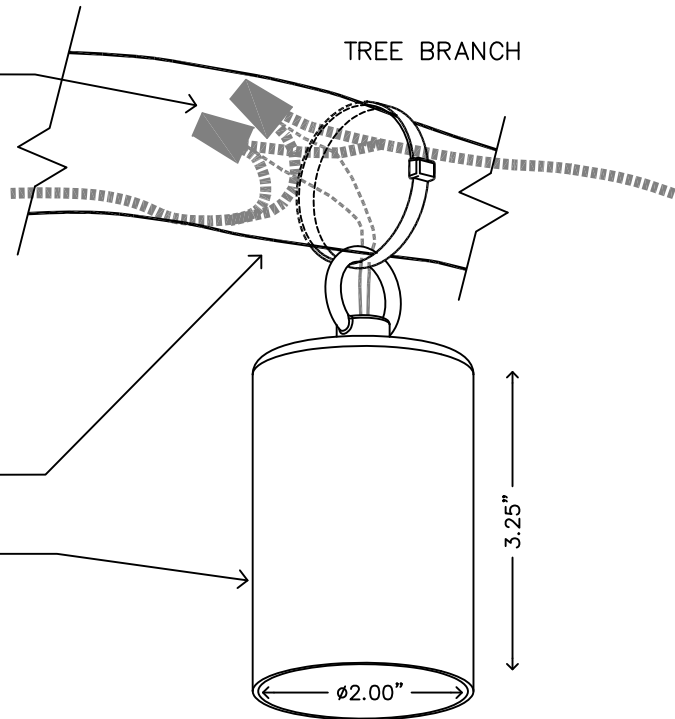
FX LUMINAIRE VITA LUME HANG  
WITH CABLE TIE. CINCH CABLE  
SO IT IS LOOSE TO ALLOW TREE  
GROWTH. REPLACE CABLE TIE  
EACH TIME LAMP IS REPLACED.

MAKE CONNECTION TO 12-16 GA  
MAINLINE ON THE BACK SIDE OF  
BRANCH OUT OF SIGHT, USING  
WATER PROOF CONNECTORS OR  
SOLDERED CONNECTION.

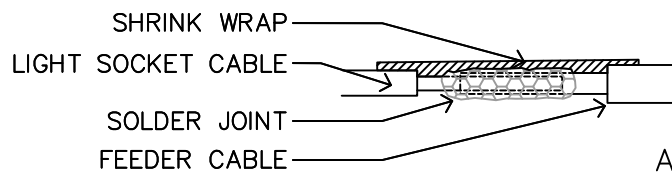
USE SUPPLIED CABLE TIES  
AND WIRE NUTS.

DUAL CONTACT FROSTED 20W  
MAXIMUM HALOGEN LAMP.

THIS FIXTURE IS DESIGNED  
FOR DOWN LIGHTING ONLY.  
DO NOT USE IN AN UPLIGHT  
POSITION.



SECTION/ELEVATION



ALTERNATIVE WIRE  
CONNECTION

XX VITA LUME(VL)  
BRANCH MOUNT

NOT TO SCALE

FX LUMINAIRE DETAIL