

FXLuminaire.

LED LIGHTING CATALOG 2014

LANDSCAPE & ARCHITECTURAL LIGHTING | *The Intersection of Art and Engineering*





LIGHT UP THE NIGHT WITH *color filters*

Every FX Luminaire LED fixture includes three color filters and a frosted lens, enabling customization of the color temperature and beam spread before or after installation. More options make it easy to accent the highlights of any landscape. Magnify the beauty of green leaves

at the start of summer with a green filter; boost the warmth of autumn colors come fall; or showcase the stark beauty of bare bark during winter with a blue filter to create drama and allure in an otherwise dormant landscape.

Color filtration

The chrome reflector is the basis for all stacking filters

From the top

Add and remove filters by interlocking them with a quarter turn

Seamless integration

Frosted filters or beam angle lenses soften and diffuse color filters or LED glare



FILTER COLOR TEMPERATURES CCT (K)

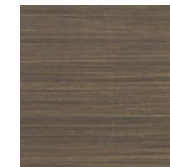
Frosted 3900 Amber 2900 Green 4500 Blue 5200

FX LUMINAIRE FINISHES

Metals



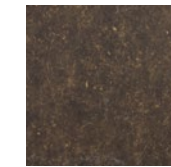
AB on copper
Antique Bronze



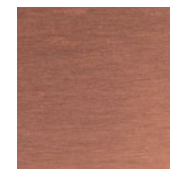
AB on brass
Antique Bronze



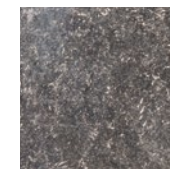
AT on copper
Antique Tumbled



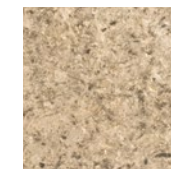
AT on brass
Antique Tumbled



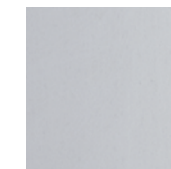
CU
Copper



NP
Nickel Plate

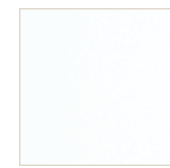


BS
Natural Brass



SS
Stainless Steel

Powder coat



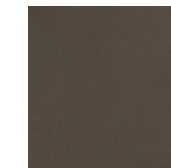
WG
White Gloss



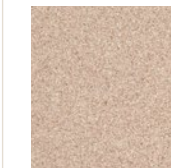
FW
Flat White



AL
Almond



BZ
Bronze Metallic



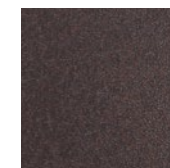
DG
Desert Granite



WI
Weathered Iron



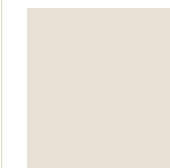
VF
Verde Speckle



SB
Sedona Brown



FB
Flat Black

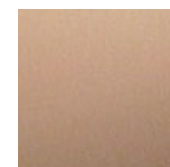


M
Matte Gray
(Luxor and LX only)

Composites



CB
Camo Bronze



DT
Desert Tan

TABLE OF CONTENTS

| | |
|--|-----------|
| LIGHTING CONTROLLERS | 05 |
| From complete zoning and dimming capabilities to traditional transformers, FX Luminaire is leading the way in LED system control. | |
| UP LIGHTS | 09 |
| FX Luminaire provides an efficient, aesthetically pleasing LED up light solution for any landscape lighting need. | |
| PATH LIGHTS | 15 |
| Our line of LED path lights provides a wide array of styles, finishes, and material options to efficiently illuminate all kinds of landscapes. | |
| WALL LIGHTS | 23 |
| Seamlessly integrating wall lights into outdoor lighting not only increases safety, it can also greatly enhance ambiance. FX Luminaire provides an efficient LED option for any wall light need. | |
| DOWN LIGHTS | 29 |
| FX Luminaire LED down lights provide endless opportunity to efficiently mimic natural moonlight and enhance the effects of other lights. | |
| WELL & UNDERWATER LIGHTS | 33 |
| The FX Luminaire line of LED specialty lights was developed to provide efficient, versatile solutions for niche applications and specialized effects. | |
| ACCESSORIES & WARRANTY | 37 |
| FX Luminaire accessories and replacement parts to customize your fixtures and keep your lighting elements up to date. | |



The Luxor ZD

A LIGHTING REVOLUTION

With complete Zoning and Dimming capabilities and optional Wi-Fi control, the Luxor lighting control system offers unheard of freedom and flexibility.

Main Features

- Up to 250 independently adjustable lighting groups can be created
- Compatible with FX ZD LED fixtures only
- All groups can be turned on independently and dimmed from 1-100%
- User interface includes a full color LCD display for easy setup, maintenance and adjusting of groups
- Uses event-based scheduling, which allows a single group of lights to change dimming percentages throughout the night
- Optional iOS or Android control with the Wi-Fi module accessory (sold separately)
- Wirelessly assign fixtures to groups with the LAM accessory* (sold separately)

Detail Features

- Fully removable facepack
- Simple two-wire configuration for easy installation and adjusting
- Fixture addressing takes place on the front of the facepack for easy access
- No matter where a light is within a system, it can communicate with the transformer to receive its schedule, dimming percentage, and group
- Astronomical Timing Function with Map Placement
- Available in 150 & 300 Watts
- Stainless Steel or Matte Gray powder coated cabinet finish options



Smartphone with Luxor Wi-Fi App to wirelessly adjust lighting at any time

Smartphone with Light Assignment Module (LAM) which wirelessly assigns fixtures to groups using ActivAssign™ technology

Learn more about optional Luxor control with Wi-Fi device visit fxl.com/luxor-wifi



DIMENSIONS

Overall height: 13"/33 cm
Overall width: 8"/20.3 cm
Overall depth: 5"/15.24 cm

| DESCRIPTION | CODE |
|--------------------------------|--|
| CONTROLLER | LZD150, LZD300 |
| Wi-Fi MODULE OPTION | FXWIFIMOD (with antenna) |
| LIGHT ASSIGNMENT MODULE OPTION | LAM (for iOS & Android smartphones and tablets*) |
| LUXOR FACEPACK MOUNT OPTION | LUXORFPMNT |
| FINISHES | |
| Metals Powder Coat | |
| SS M | |

ORDERING EXAMPLE: ▶ LZD300-SS = CONTROLLER-FINISH

| SPECIFICATIONS | 150 | 300 |
|----------------|-----------------------|----------|
| WATTS | 150 watt | 300 watt |
| SENSOR | Astronomical Timing | |
| DISPLAY | Full Color LCD Screen | |

*Not all iOS & Android devices will work with the LAM, please check www.fxl.com/LAMDevices.





Lighting Control DESIGNED TO PERFORM

LIGHTING CONTROL OPTIONS

The LX and PX are reliable and versatile power control options for both LED and incandescent lighting systems. While the PX is a traditional transformer, the LX features a digital interface with advanced scheduling options and features. Regardless of the system you're creating, FX Luminaire has the right control solution.



LX



DIMENSIONS

Overall height: 11.4"/28.9 cm
Overall width: 7.14"/18.1 cm
Overall depth: 5.04"/12.8 cm

The LX is a fully digital transformer. Its integrated LCD screen provides time, photocell, function, and line output readouts. It also features a backlit digital display which means adjustments can easily be made 24/7. It includes six on/off times, a battery backup and a 120V low-voltage indicator.

| DESCRIPTION | CODE |
|--|---|
| WATTS | 150 or 300 |
| FINISHES | |
| Metals | Powder Coat |
|  SS |  M |

ORDERING EXAMPLE: ▶ LX150-SS = CONTROLLER-FINISH

SPECIFICATIONS

| | |
|------------------|--|
| ACCESSORY OPTION | 26' Photocell Kit, 9V battery adapter for remote programming (battery not incl.) |
| SENSOR | PC (12V Photocell and Clock Timer with 6 on/off times) |
| DISPLAY | Backlit Digital LCD Screen |








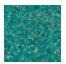


PX



DIMENSIONS

Overall height:
300 & 600 watt: 13.5"/34.3 cm
900 watt: 16.5"/41.9 cm
Overall width: 7.5"/19.1 cm
Overall depth: 6"/15.2 cm

The PX has been the industry's most reliable multi-tap transformer for more than a decade. Safe and easy to install, the PX is assembled in-house and includes many exclusive features for its class.

| DESCRIPTION | CODE |
|--|---|
| WATTS | 300, 600 or 900 |
| ACCESSORY OPTION | T (Timer) PC (Photocell) TPC (Timer and Photocell) PXSYNC (Lighting Synchronizer to work with irrigation transformers) |
| FINISHES | |
| Metals | Powder Coat |
|  SS |  WG |
|  FW |  AL |
|  BZ |  DG |
|  WI |  VF |
|  SB |  FB |

ORDERING EXAMPLE: ▶ PX600-PC-SS = CONTROLLER-SENSOR-FINISH

SPECIFICATIONS

| | |
|-----|-----------------|
| BOX | Stainless Steel |
|-----|-----------------|



Up lights
DESIGNED TO ENHANCE

ADD SOME DRAMA TO YOUR DESIGN

Successfully utilizing up lights in a landscape lighting system design can add a tremendous amount of texture, contrast and interest. Whether you're trying

to add depth, highlight colors, or create art, FX Luminaire provides a highly efficient LED up light for virtually any outdoor application.

CC



SPECIFICATIONS

Overall height: 5.3"/13.3 cm
Long shield height: 6.4"/16.3 cm
Exposed diameter: 1.6"/4.1 cm

The CC fuses high design with precision engineering, making it ideal for small-scale elements.

| DESCRIPTION | CODE |
|---------------|------------------|
| FIXTURE | CC |
| ZD OPTION | ZD |
| LEDs | 1LED, 3LED |
| SHIELD OPTION | LS (Long Shield) |

FINISHES

Metals



ORDERING EXAMPLE: ▶ **CC-1LED-BS** = FIXTURE-LED-FINISH

| SPECIFICATIONS | 1 LED | 3 LED |
|---------------------------------|---------|---------|
| HALOGEN LUMEN OUTPUT EQUIVALENT | 10 watt | 20 watt |
| WATTS USED/VA TOTAL | 2.0/2.4 | 4.2/4.5 |
| MAX LUMENS | 59 | 123 |

VS



SPECIFICATIONS

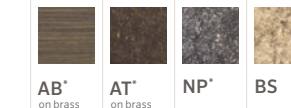
Overall height: 7"/17.8 cm
Long shield height: 8.3"/21.2 cm
Exposed diameter: 2.5"/6.4 cm

Designed for mid-size landscapes, the VS provides unmatched elegance and function.

| DESCRIPTION | CODE |
|---------------|------------------------|
| FIXTURE | VS |
| ZD OPTION | ZD |
| LEDs | 1LED, 3LED, 6LED, 9LED |
| SHIELD OPTION | LS (Long Shield) |

FINISHES

Metals



ORDERING EXAMPLE: ▶ **VS-ZD-3LED-LS-BS** = FIXTURE-ZD OPTION-LED-SHIELD OPTION-FINISH

| SPECIFICATIONS | 1 LED | 3 LED | 6 LED | 9 LED |
|---------------------------------|---------|---------|-----------|-----------|
| HALOGEN LUMEN OUTPUT EQUIVALENT | 10 watt | 20 watt | 35 watt | 50 watt |
| WATTS USED/VA TOTAL | 2.0/2.4 | 4.2/4.5 | 10.1/13.5 | 11.2/13.5 |
| MAX LUMENS | 59 | 159 | 279 | 357 |

NOTE: Useful LED Life L70 (Avg): 50,000 hrs. Input Voltage: 10 to 15 V.

** May require longer lead time*

FB

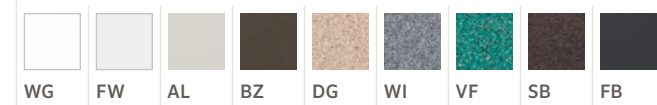
The FB is sleek, compact, and fits well into tight spaces. It accommodates up to a 3 LED Board.



| DESCRIPTION | CODE |
|-------------|------------|
| FIXTURE | FB |
| ZD OPTION | ZD |
| LEDs | 1LED, 3LED |

FINISHES

Powder Coat



ORDERING EXAMPLE: **FB-1LED-BZ** = FIXTURE-LED-FINISH

| SPECIFICATIONS | 1 LED | 3 LED |
|---------------------------------|---------|---------|
| HALOGEN LUMEN OUTPUT EQUIVALENT | 10 watt | 20 watt |
| WATTS USED/VA TOTAL | 2.0/2.4 | 4.2/4.5 |
| MAX LUMENS | 60 | 155 |

DIMENSIONS

Height: 7.5"/19 cm
Diameter: 2"/5 cm

NP

The NP is highly versatile and can be fine-tuned to beautify any landscape feature.



| DESCRIPTION | CODE |
|---------------|------------------------|
| FIXTURE | NP |
| ZD OPTION | ZD |
| LEDs | 1LED, 3LED, 6LED, 9LED |
| SHIELD OPTION | LS (Long Shield) |

FINISHES

Powder Coat



ORDERING EXAMPLE: **NP-ZD-6LED-BZ** = FIXTURE-ZD OPTION-LED-FINISH

| SPECIFICATIONS | 1 LED | 3 LED | 6 LED | 9 LED |
|---------------------------------|---------|---------|-----------|-----------|
| HALOGEN LUMEN OUTPUT EQUIVALENT | 10 watt | 20 watt | 35 watt | 50 watt |
| WATTS USED/VA TOTAL | 2.0/2.4 | 4.2/4.5 | 10.1/13.5 | 11.2/13.5 |
| MAX LUMENS | 52 | 135 | 279 | 357 |

DIMENSIONS

Height: 8.4"/21.2 cm
Long Shield: 10.3"/26.1 cm
Diameter: 2.7"/6.8 cm

QZ

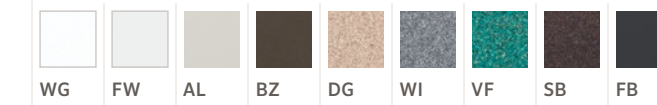
The QZ is a small, sleek up light that can be hidden in tight spaces to create interesting design effects.



| DESCRIPTION | CODE |
|-------------|------|
| FIXTURE | QZ |
| ZD OPTION | ZD |
| LEDs | 1LED |

FINISHES

Powder Coat



ORDERING EXAMPLE: **QZ-ZD-1LED-BZ** = FIXTURE-ZD OPTION-LED-FINISH

| SPECIFICATIONS | 1 LED |
|---------------------------------|---------|
| HALOGEN LUMEN OUTPUT EQUIVALENT | 10 watt |
| WATTS USED/VA TOTAL | 2.0/2.4 |
| MAX LUMENS | 62 |

DIMENSIONS

Height: 5.75"/14.61 cm
Diameter: 1.75"/4.45 cm



NOTE: Useful LED Life L70 (Avg): 50,000 hrs. Input Voltage: 10 to 15 V.

* May require longer lead time

BATHE IN THE LIGHT

Utilizing LED fixtures to wash walls with light can turn the ordinary fence or retaining wall into a dazzling work of nighttime art. Whether it's to create an ambiance or

to highlight the natural beauty of the landscape, FX Luminaire's LED wall washes provide a second-to-none combination of performance and efficiency.

PB

The wider angle of the PB allows broader lighting for larger structures and spaces.

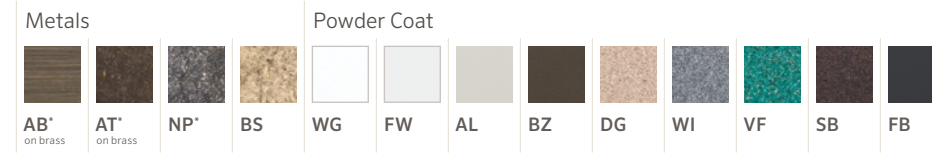


DIMENSIONS

Height: 5.5"/13.9 cm
Width: 3.9"/9.8 cm
Depth: 2"/5 cm

| DESCRIPTION | CODE |
|-------------|------------|
| FIXTURE | PB |
| ZD OPTION | ZD |
| LEDs | 1LED, 3LED |

FINISHES



ORDERING EXAMPLE: ▶ **PB-1LED-BS** = FIXTURE-LED-FINISH

| SPECIFICATIONS | 1 LED | 3 LED |
|---------------------------------|---------|---------|
| HALOGEN LUMEN OUTPUT EQUIVALENT | 10 watt | 20 watt |
| WATTS USED/VA TOTAL | 2.0/2.4 | 4.2/4.5 |
| MAX LUMENS | 71 | 151 |

LC

Our largest wall-wash up light, the LC, projects a broad spectrum of light on large walls and spaces.

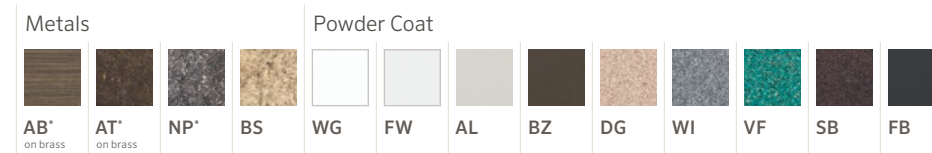


DIMENSIONS

Height: 6.5"/16.5 cm
Width: 4.5"/11.4 cm
Depth: 3"/7.6 cm

| DESCRIPTION | CODE |
|-------------|------------------------|
| FIXTURE | LC |
| ZD OPTION | ZD |
| LEDs | 1LED, 3LED, 6LED, 9LED |

FINISHES



ORDERING EXAMPLE: ▶ **LC-ZD-9LED-BS** = FIXTURE-ZD OPTION-LED-FINISH

| SPECIFICATIONS | 1 LED | 3 LED | 6 LED | 9 LED |
|---------------------------------|---------|---------|-----------|-----------|
| HALOGEN LUMEN OUTPUT EQUIVALENT | 10 watt | 20 watt | 35 watt | 50 watt |
| WATTS USED/VA TOTAL | 2.0/2.4 | 4.2/4.5 | 10.1/13.5 | 11.2/13.5 |
| MAX LUMENS | 63 | 154 | 331 | 436 |







NOTE: Useful LED Life L70 (Avg): 50,000 hrs. Input Voltage: 10 to 15 V.

* May require longer lead time

Path Lights
DESIGNED TO ILLUMINATE



PETITE

| | | |
|---|---|---|
|  BD DIMENSIONS Overall height: 15.5"/39.4 cm Exposed width: 4.7"/11.9 cm |  EA DIMENSIONS Overall height: 15.9"/40.4 cm Exposed width: 4.7"/11.9 cm |  HC DIMENSIONS Overall height: 15"/38.1 cm Exposed width: 3.6"/9.2 cm |
|  PF DIMENSIONS Overall height: 15"/38.1 cm Exposed width: 5"/12.7 cm |  PR DIMENSIONS Overall height: 15"/38.1 cm Exposed width: 3.8"/9.7 cm |  SC DIMENSIONS Overall height: 15.5"/39.4 cm Exposed width: 4.7"/11.9 cm |

Petite LED path lights are small in stature but big on looks, efficiency, and reliability. Just as beautiful as the light they emit, designers can find a petite 1LED model to match the most elegant and edgy motifs.

GRANDE

| | | |
|---|---|---|
|  CB DIMENSIONS Overall height: 16.2"/41.2 cm Exposed width: 7.4"/18.8 cm |  QF DIMENSIONS Overall height: 16.8"/42.7 cm Exposed width: 7.4"/18.8 cm |  JS DIMENSIONS Overall height: 16.5"/41.9 cm Exposed width: 6.3"/16 cm |
|  DM DIMENSIONS Overall height: 16.2"/41.2 cm Exposed width: 7.1"/18 cm |  CV DIMENSIONS Overall height: 15.8"/40.1 cm Exposed width: 7.4"/18.3 cm |  CA DIMENSIONS Overall height: 16.2"/41.2 cm Exposed width: 7.4"/18.8 cm |

Grande LED path lights are a larger version of the petites and are available in both 1 or 3 LED options.



STEP 1 TOP ASSEMBLY

| DESCRIPTION | CODE |
|---------------------|--|
| PETITE TOP ASSEMBLY | BDLEDTA, EALEDTA, HCLEDTA, PFLEDTA, PRLEDTA, SCLEDTA |
| GRANDE TOP ASSEMBLY | CBLEDTA, QFLEDTA, JSLEDTA, DMLEDTA, CVLEDTA, CALEDTA |

TOP ASSEMBLY FINISHES

| | | | | | | | | | | | | | |
|-----------------|-----------------|----|-----|----|-------------|----|----|----|----|----|----|----|----|
| Metals | | | | | Powder Coat | | | | | | | | |
| | | | | | | | | | | | | | |
| AB on copper | AT on copper | CU | NP' | BS | WG | FW | AL | BZ | DG | WI | VF | SB | FB |

STEP 2 RISER ASSEMBLY

| DESCRIPTION | CODE |
|--------------|-------------------------------|
| RISER TYPE | P (Petite), G (Grande) |
| ZD OPTION | ZD |
| LAMP | 1LED, 3LED (Grande only) |
| RISER HEIGHT | 8RA, 12RA, 18RA, 24RA*, 36RA* |

RISER FINISHES

| | | | | | | | | | | | | | |
|-----------------|-----------------|----|-----|----|-------------|----|----|----|----|----|----|----|----|
| Metals | | | | | Powder Coat | | | | | | | | |
| | | | | | | | | | | | | | |
| AB on copper | AT on copper | CU | NP' | BS | WG | FW | AL | BZ | DG | WI | VF | SB | FB |

ORDERING EXAMPLE: **> CBLEDTA-CU** = TOP ASSEMBLY-TOP FINISH (STEP 1)
> G-3LED-12RA-CU = RISER TYPE-LED-RISER HEIGHT-RISER FINISH (STEP 2)

| SPECIFICATIONS | 1 LED | 3 LED |
|---------------------------------|---------|---------|
| HALOGEN LUMEN OUTPUT EQUIVALENT | 10 watt | 20 watt |
| WATTS USED/VA TOTAL | 2.0/2.4 | 4.2/4.5 |
| MAX LUMENS | 39 | 103 |

NOTE: Useful LED Life L70 (Avg): 50,000 hrs. Input Voltage: 10 to 15 V.
 Only the copper portions of the path lights are powder coated.
 The brass pieces remain natural. Both Top and Riser Assemblies are required to complete the fixture

* May require longer lead time

LIGHT ON MATERIAL, BIG ON ILLUMINATION

Constructed with lightweight, reliable aluminum, these mid-sized fixtures feature sleek lines and aesthetic design which beautifully enhance and complement any landscape.

TM



DIMENSIONS

Height: 15"/38.1 cm
Diameter: 5"/12.7 cm

PL



DIMENSIONS

Height: 15"/38.1 cm
Diameter: 6"/15.2 cm

STEP 1 TOP ASSEMBLY

| DESCRIPTION | CODE |
|-----------------------|-----------------|
| TOP ASSEMBLY | TMLEDTA, PLEDTA |
| TOP ASSEMBLY FINISHES | |
| Powder Coat | |
| WG | FW |
| AL | BZ |
| DG | WI |
| VF | SB |
| FB | |

STEP 2 RISER ASSEMBLY

| DESCRIPTION | CODE |
|----------------|--------------------------------------|
| RISER TYPE | A (Aluminum) |
| ZD OPTION | ZD |
| LAMP | 1LED, 3LED |
| RISER HEIGHT | 8RA, 12RA, 18RA, 24RA*, 30RA*, 36RA* |
| RISER FINISHES | |
| Powder Coat | |
| WG | FW |
| AL | BZ |
| DG | WI |
| VF | SB |
| FB | |

ORDERING EXAMPLE: ▶ **PLEDTA-BZ** = TOP ASSEMBLY-TOP FINISH (STEP 1)
▶ **A-3LED-12RA-BZ** = RISER TYPE-LED-RISER HEIGHT-RISER FINISH (STEP 2)

| SPECIFICATIONS | 1 LED | 3 LED |
|---------------------------------|---------|---------|
| HALOGEN LUMEN OUTPUT EQUIVALENT | 10 watt | 20 watt |
| WATTS USED/VA TOTAL | 2.0/2.4 | 4.2/4.5 |
| MAX LUMENS | 39 | 103 |

NOTE: Useful LED Life L70 (Avg): 50,000 hrs. Input Voltage: 10 to 15 V.
Only the copper portions of the path lights are powder coated.
The brass pieces remain natural. Both Top and Riser Assemblies are required to complete the fixture

* May require longer lead time

FG



DIMENSIONS

Height: 22"/55.88 cm
Diameter: 5"/12.7 cm

The FG can also be used in the center of planters to accent flowers and plants, or placed along a path to light the way.

| DESCRIPTION | CODE |
|------------------|-------------------------|
| FIXTURE | FG |
| ZD OPTION | ZD |
| LEDs | 1LED, 3LED, 6 LED, 9LED |
| FINISHES | |
| Metals | |
| AB* on copper | AT* on copper |
| CU | NP* |
| Powder Coat | |
| WG | FW |
| AL | BZ |
| DG | WI |
| VF | SB |
| FB | |

ORDERING EXAMPLE: ▶ **FG-ZD-6LED-CU** = FIXTURE-ZD OPTION-LED-FINISH

| SPECIFICATIONS | 1 LED | 3 LED | 6 LED | 9 LED |
|---------------------------------|---------|---------|-----------|-----------|
| HALOGEN LUMEN OUTPUT EQUIVALENT | 10 watt | 20 watt | 35 watt | 50 watt |
| WATTS USED/VA TOTAL | 2.0/2.4 | 4.2/4.5 | 10.1/13.5 | 11.2/13.5 |
| MAX LUMENS | 59 | 159 | 279 | 357 |

TD



DIMENSIONS

Height: 18"/45.72 cm
XT Height: 29.5"/74.93 cm
Diameter: 5"/12.7 cm

The TD is strong in illumination but visually delicate. This makes it one of the most efficient path lights as it can disappear in the garden flora, yet still brighten up a pathway.

| DESCRIPTION | CODE |
|------------------|-------------------------|
| FIXTURE | TD |
| ZD OPTION | ZD |
| LEDs | 1LED, 3LED, 6 LED, 9LED |
| RISER OPTION | XT |
| FINISHES | |
| Metals | |
| AB* on copper | AT* on copper |
| CU | NP* |
| Powder Coat | |
| WG | FW |
| AL | BZ |
| DG | WI |
| VF | SB |
| FB | |

ORDERING EXAMPLE: ▶ **TD-ZD-3LED-XT-AB** = FIXTURE-ZD OPTION-LED-RISER OPTION-FINISH

| SPECIFICATIONS | 1 LED | 3 LED | 6 LED | 9 LED |
|---------------------------------|---------|---------|-----------|-----------|
| HALOGEN LUMEN OUTPUT EQUIVALENT | 10 watt | 20 watt | 35 watt | 50 watt |
| WATTS USED/VA TOTAL | 2.0/2.4 | 4.2/4.5 | 10.1/13.5 | 11.2/13.5 |
| MAX LUMENS | 59 | 159 | 279 | 357 |

NOTE: Useful LED Life L70 (Avg): 50,000 hrs. Input Voltage: 10 to 15 V.

* May require longer lead time

PM



DIMENSIONS

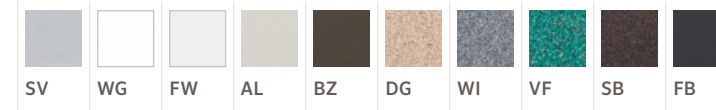
Height: 14"/35.56 cm
Diameter: 2.5"/6.35 cm

The PM was designed for the avant garde gravel and ornamental grass garden. Constructed from aerospace aluminum alloy, it is as durable as it is attractive.

| DESCRIPTION | CODE |
|-------------|------------------------|
| FIXTURE | PM |
| ZD OPTION | ZD |
| LEDs | 1LED, 3LED, 6LED, 9LED |

FINISHES

Powder Coat



ORDERING EXAMPLE: ▶ **PM-ZD-3LED-DG** = FIXTURE-ZD OPTION-LED-FINISH

| SPECIFICATIONS | 1 LED | 3 LED | 6 LED | 9 LED |
|---------------------------------|---------|---------|-----------|-----------|
| HALOGEN LUMEN OUTPUT EQUIVALENT | 10 watt | 20 watt | 35 watt | 50 watt |
| WATTS USED/VA TOTAL | 2.0/2.4 | 4.2/4.5 | 10.1/13.5 | 11.2/13.5 |
| MAX LUMENS | 59 | 159 | 279 | 357 |



NOTE: Useful LED Life L70 (Avg): 50,000 hrs. Input Voltage: 10 to 15 V.

** May require longer lead time*

Wall Lights

DESIGNED TO DEFINE



CREATE SUBTLE IMPACT

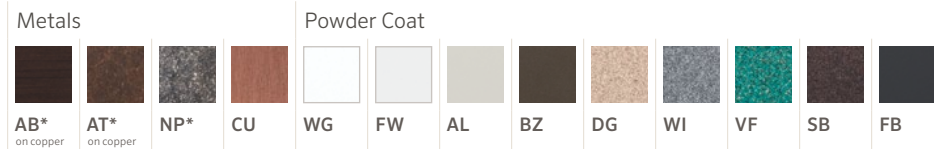
Incorporate FX Luminaire LED wall lights in your design to increase safety, define perimeters, and enhance architectural walls and stonework. FX Luminaire offers a variety of wall lights to seamlessly integrate into any setting.

CP

The CP is a compact wall light engineered to functionally and aesthetically illuminate walkways, stairways, and decks.

| DESCRIPTION | CODE |
|-------------|------|
| FIXTURE | CP |
| ZD OPTION | ZD |
| LEDs | 1LED |

FINISHES



ORDERING EXAMPLE: ▶ **CP-1LED-CU** = FIXTURE-LED-FINISH

| SPECIFICATIONS | 1 LED |
|---------------------------------|---------|
| HALOGEN LUMEN OUTPUT EQUIVALENT | 10 watt |
| WATTS USED/VA TOTAL | 2.0/2.4 |
| MAX LUMENS | 4 |



DIMENSIONS

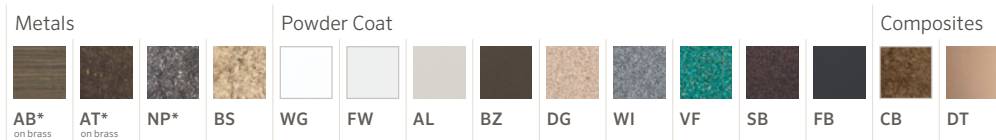
Height: 3.5"/8.9 cm
Width: 5"/12.7 cm
Depth: 3.875"/9.84 cm
Lead length: 10'/3 m

UN

The UN is a compact wall light with a wide array of finish options, making it a great solution for any compact wall light need.

| DESCRIPTION | CODE |
|-------------|------|
| FIXTURE | UN |
| ZD OPTION | ZD |
| LEDs | 1LED |

FINISHES



ORDERING EXAMPLE: ▶ **UN-1LED-CB** = FIXTURE-LED-FINISH

| SPECIFICATIONS | 1 LED |
|---------------------------------|---------|
| HALOGEN LUMEN OUTPUT EQUIVALENT | 10 watt |
| WATTS USED/VA TOTAL | 2.0/2.4 |
| MAX LUMENS | 11 |



DIMENSIONS

Height: 3.5"/8.9 cm
Width: 5"/12.7 cm
Depth: 3.875"/9.84 cm
Lead length: 10'/3 m

NOTE: Useful LED Life L70 (Avg): 50,000 hrs. Input Voltage: 10 to 15 V.

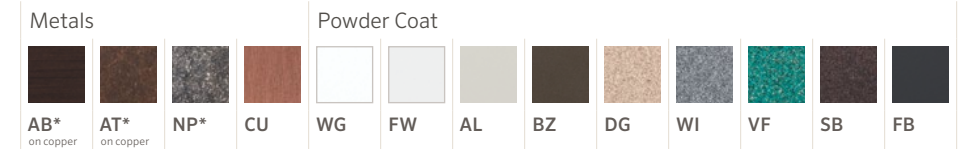
* May require longer lead time

LM

When a project calls for a higher level of illumination, the LM is the perfect solution. It can be used alone or with the compact UN to maintain consistent lighting and style.

| DESCRIPTION | CODE |
|-------------|------|
| FIXTURE | LM |
| ZD OPTION | ZD |
| LEDs | 2LED |

FINISHES



ORDERING EXAMPLE: ▶ **LM-2LED-CU** = FIXTURE-LED-FINISH

| SPECIFICATIONS | 2 LED |
|---------------------------------|---------|
| HALOGEN LUMEN OUTPUT EQUIVALENT | 10 watt |
| WATTS USED/VA TOTAL | 2.0/2.4 |
| MAX LUMENS | 6 |



DIMENSIONS

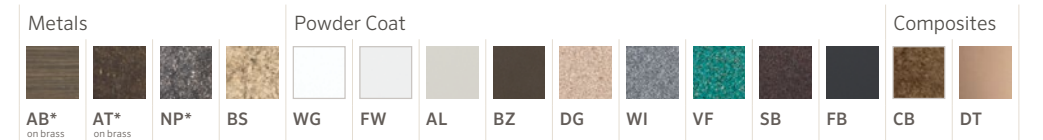
Height: 3.5"/8.9 cm
Width: 9"/22.9 cm
Depth: 4"/10.16 cm
Lead length: 10'/3 m

PD

When a project calls for a higher level of illumination, the PD is the perfect solution. It can be used alone or with the compact CP to maintain consistent lighting and style.

| DESCRIPTION | CODE |
|-------------|------|
| FIXTURE | UN |
| ZD OPTION | ZD |
| LEDs | 2LED |

FINISHES



ORDERING EXAMPLE: ▶ **PD-2LED-CB** = FIXTURE-LED-FINISH

| SPECIFICATIONS | 2 LED |
|---------------------------------|---------|
| HALOGEN LUMEN OUTPUT EQUIVALENT | 10 watt |
| WATTS USED/VA TOTAL | 4.0/4.8 |
| MAX LUMENS | 26 |



DIMENSIONS

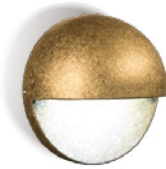
Height: 3.5"/8.9 cm
Width: 9"/22.9 cm
Depth: 4"/10.16 cm
Lead length: 10'/3 m

NOTE: Useful LED Life L70 (Avg): 50,000 hrs. Input Voltage: 10 to 15 V.

* May require longer lead time

MS

The unique look and soft glow of the MS adds interest to any system design. Changeable filters provide for an array of memorable effects.



DIMENSIONS

Diameter: 3.7"/9.3 cm
Depth: 2"/5.1 cm

| DESCRIPTION | CODE |
|-------------|------|
| FIXTURE | MS |
| ZD OPTION | ZD |
| LEDs | 1LED |

FINISHES

| Metals | | | | Powder Coat | | | | | | | | | |
|----------|----------|-----|----|-------------|----|----|----|----|----|----|----|----|--|
| | | | | | | | | | | | | | |
| AB* | AT* | NP* | BS | WG | FW | AL | BZ | DG | WI | VF | SB | FB | |
| on brass | on brass | | | | | | | | | | | | |

ORDERING EXAMPLE: ▶ **MS-1LED-BS** = FIXTURE-LED-FINISH

| SPECIFICATIONS | 1 LED |
|---------------------------------|---------|
| HALOGEN LUMEN OUTPUT EQUIVALENT | 10 watt |
| WATTS USED/VA TOTAL | 2.0/2.4 |
| MAX LUMENS | 52 |

LF

The LF is our LED under-the-cap hardscape wall light. It can easily be fitted between a block wall and capstone for a neat, clean installation.



DIMENSIONS

Height: .9"/2.2 cm
Width: 6.7"/17 cm
Depth: 3.6"/9.2 cm

| DESCRIPTION | CODE |
|-------------|------|
| FIXTURE | LF |
| ZD OPTION | ZD |
| LEDs | 1LED |

FINISHES

| Metals | | | | Powder Coat | | | | | | | | | | | |
|-----------|-----------|----------|----------|-------------|----|----|----|----|----|----|----|----|----|----|----|
| | | | | | | | | | | | | | | | |
| AB* | AT* | AB* | AT* | CU | BS | SS | WG | FW | AL | BZ | DG | WI | VF | SB | FB |
| on copper | on copper | on brass | on brass | | | | | | | | | | | | |

ORDERING EXAMPLE: ▶ **LF-1LED-BS** = FIXTURE-LED-FINISH

| SPECIFICATIONS | 1 LED |
|---------------------------------|---------|
| HALOGEN LUMEN OUTPUT EQUIVALENT | 10 watt |
| WATTS USED/VA TOTAL | 2.0/2.4 |
| MAX LUMENS | 77 |

NOTE: Useful LED Life L70 (Avg): 50,000 hrs. Input Voltage: 10 to 15 V.

* May require longer lead time

PO

The PO emits glare-free illumination that provides both comfort and safety. It is available in four unique shapes for maximum design flexibility.



DIMENSIONS

Overall diameter: 5.1"/8.9 cm
Overall height: 3.5"/13 cm
Lead length: 10"/3 cm

| DESCRIPTION | CODE |
|-------------|---------------------|
| FIXTURE | PO (ST, RD, SQ, WW) |
| ZD OPTION | ZD |
| LEDs | 1LED |

FACEPLATE ST (Spot), RD (Round), SQ (Square), WW (Wall Wash)

FINISHES

| Metals | | | | Powder Coat | | | | | | | | | |
|----------|----------|-----|----|-------------|----|----|----|----|----|----|----|----|--|
| | | | | | | | | | | | | | |
| AB* | AT* | NP* | BS | WG | FW | AL | BZ | DG | WI | VF | SB | FB | |
| on brass | on brass | | | | | | | | | | | | |

ORDERING EXAMPLE: ▶ **PO-1LED-ST-BZ** = FIXTURE-LED-FACEPLATE-FINISH

| SPECIFICATIONS | 1 LED |
|---------------------------------|---------|
| HALOGEN LUMEN OUTPUT EQUIVALENT | 10 watt |
| WATTS USED/VA TOTAL | 2.0/2.4 |
| MAX LUMENS | 52 |





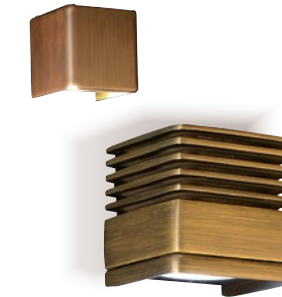
Down lights
DESIGNED TO HIGHLIGHT

DANCE IN THE MOONLIGHT

FX Luminaire LED down lights provide endless opportunities to efficiently mimic natural moonlight and enhance the effects of other lights. They can also serve practical purposes when hung or mounted above tables, barbeques, and seating areas. Discover your LED down light below.

NL

Optional Sleeve



The NL is designed to seamlessly blend into fine outdoor architectural structures and illuminate them with soft, yet functional LED efficiency.

| DESCRIPTION | CODE |
|----------------------|------------------------|
| FIXTURE | NL |
| ZD OPTION | ZD |
| LEDs | 1LED, 3LED, 6LED, 9LED |
| COPPER SLEEVE OPTION | CU |

FINISHES



ORDERING EXAMPLE: ▶ NL-3LED-CU-AB = FIXTURE-LED-SLEEVE-FINISH

DIMENSIONS

Overall height: 3.3"/8.4 cm
Exposed width: 3.2"/8.1 cm
Depth: 3.4"/8.6 cm

| SPECIFICATIONS | 1 LED | 3 LED | 6 LED | 9 LED |
|---------------------------------|---------|---------|-----------|-----------|
| HALOGEN LUMEN OUTPUT EQUIVALENT | 10 watt | 20 watt | 35 watt | 50 watt |
| WATTS USED/VA TOTAL | 2.0/2.4 | 4.2/4.5 | 10.1/13.5 | 11.2/13.5 |
| MAX LUMENS | 66 | 202 | 367 | 398 |

PS

Optional Sleeve



The PS blends beautifully with its surroundings to complement the architectural style of any home, while providing dramatic accents and LED efficiency.

| DESCRIPTION | CODE |
|----------------------|------------------------|
| FIXTURE | PS |
| ZD OPTION | ZD |
| LEDs | 1LED, 3LED, 6LED, 9LED |
| COPPER SLEEVE OPTION | CU |

FINISHES



ORDERING EXAMPLE: ▶ PS-ZD-6LED-BZ = FIXTURE-ZD OPTION-LED-FINISH

DIMENSIONS

Overall diameter: 3.2"/8.1 cm
Exposed height: 3.3"/8.4 cm

| SPECIFICATIONS | 1 LED | 3 LED | 6 LED | 9 LED |
|---------------------------------|---------|---------|-----------|-----------|
| HALOGEN LUMEN OUTPUT EQUIVALENT | 10 watt | 20 watt | 35 watt | 50 watt |
| WATTS USED/VA TOTAL | 2.0/2.4 | 4.2/4.5 | 10.1/13.5 | 11.2/13.5 |
| MAX LUMENS | 66 | 202 | 367 | 398 |

NOTE: Useful LED Life L70 (Avg): 50,000 hrs. Input Voltage: 10 to 15 V.

* May require longer lead time

JB

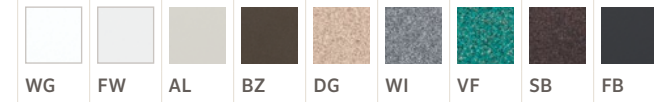


The JB is FX Luminaire's original LED down light. This fixture solves the problem of changing lamps in complicated areas by providing long-life LEDs.

| DESCRIPTION | CODE |
|-------------------|------------|
| FIXTURE | JB |
| ZD OPTION | ZD |
| LEDs | 1LED, 3LED |
| WALL MOUNT OPTION | WM |

FINISHES

Powder Coat



DIMENSIONS

Height: 8.9"/22.6 cm
Diameter: 2.4"/5.9 cm

ORDERING EXAMPLE: ▶ **JB-1LED-FB** = FIXTURE-LED-FINISH

| SPECIFICATIONS | 1 LED | 3LED |
|---------------------------------|---------|---------|
| HALOGEN LUMEN OUTPUT EQUIVALENT | 10 watt | 20 watt |
| WATTS USED/VA TOTAL | 2.0/2.4 | 4.2/4.5 |
| MAX LUMENS | 50 | 127 |

DE

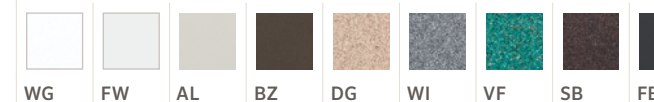


The DE is a purpose-built down light that allows for up to 9LED output. Whether placed in a tight space, or out in the open, the DE is a fine addition to any landscape.

| DESCRIPTION | CODE |
|-------------------|------------------------|
| FIXTURE | DE |
| ZD OPTION | ZD |
| LEDs | 1LED, 3LED, 6LED, 9LED |
| WALL MOUNT OPTION | WM |

FINISHES

Powder Coat



DIMENSIONS

Height: 9.7"/24.6 cm
Diameter: 3"/7.6 cm

ORDERING EXAMPLE: ▶ **DE-6LED-WM-SB** = IXTURE-LED-WALL MOUNT-FINISH

| SPECIFICATIONS | 1 LED | 3LED | 6LED | 9LED |
|---------------------------------|---------|---------|-----------|-----------|
| HALOGEN LUMEN OUTPUT EQUIVALENT | 10 watt | 20 watt | 40watt | 50 watt |
| WATTS USED/VA TOTAL | 2.0/2.4 | 4.2/4.5 | 10.1/13.5 | 11.2/13.5 |
| MAX LUMENS | 59 | 162 | 328 | 334 |

NOTE: Useful LED Life L70 (Avg): 50,000 hrs. Input Voltage: 10 to 15 V.

** May require longer lead time*

LE

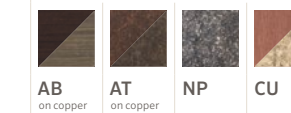


The LE is a compact hanging down light designed to illuminate a space from above without the need for a large mount.

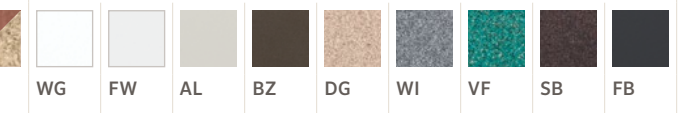
| DESCRIPTION | CODE |
|-------------|------|
| FIXTURE | LE |
| ZD OPTION | ZD |
| LEDs | 1LED |

FINISHES

Metals



Powder Coat

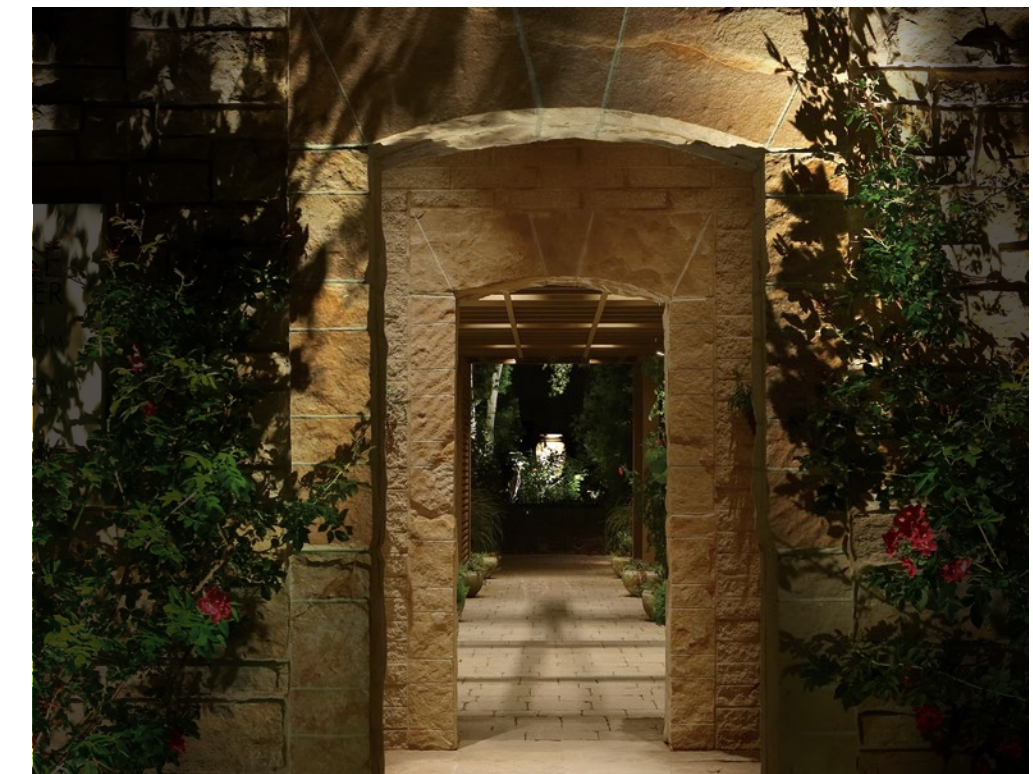


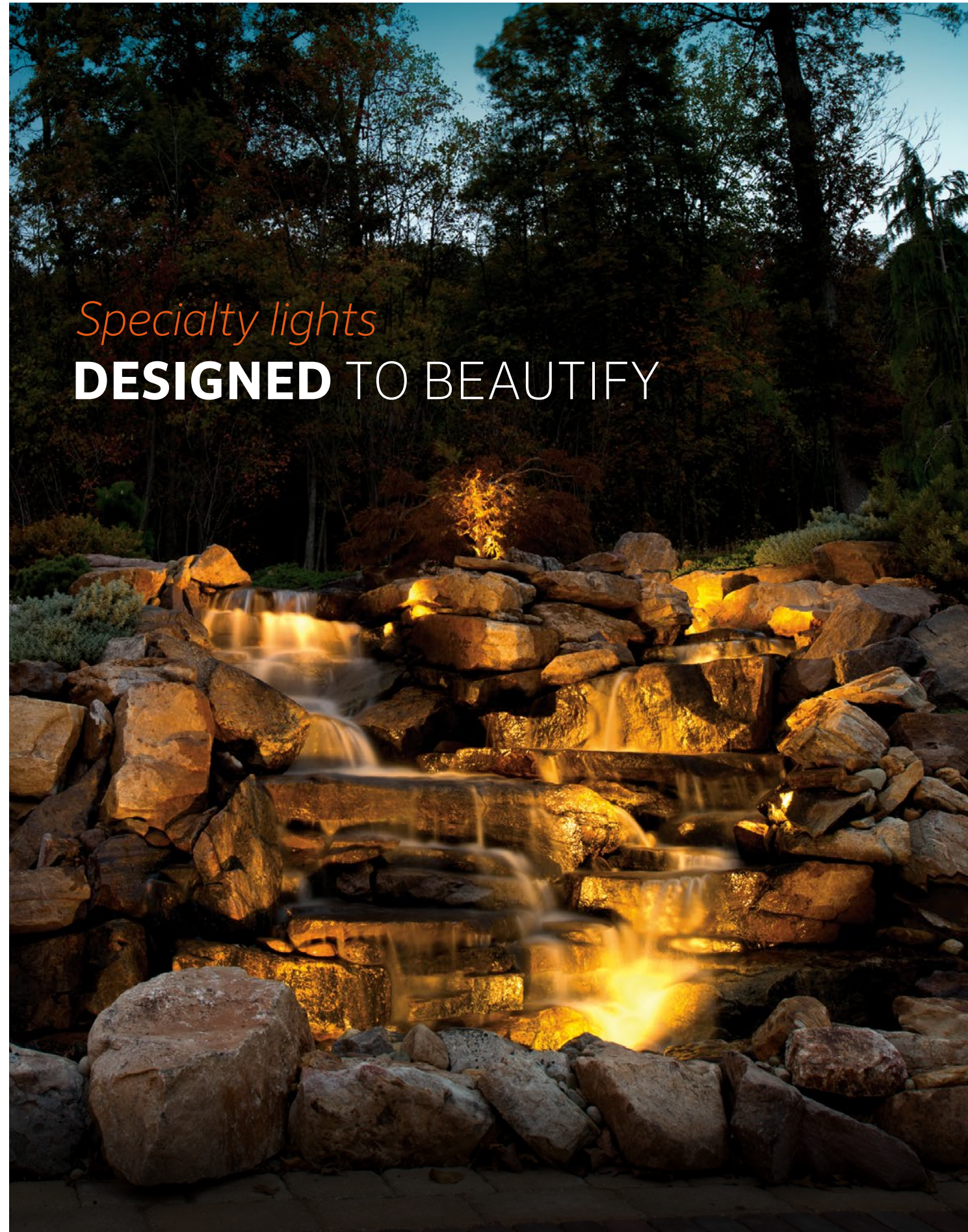
DIMENSIONS

Overall height: 3.3"/8.3 cm
Exposed diameter: 1.6"/4.1 cm

ORDERING EXAMPLE: ▶ **LE-1LED-CU** = FIXTURE-LED-FINISH

| SPECIFICATIONS | 1 LED |
|---------------------------------|---------|
| HALOGEN LUMEN OUTPUT EQUIVALENT | 10 watt |
| WATTS USED/VA TOTAL | 2.0/2.4 |
| MAX LUMENS | 55 |





Specialty lights
DESIGNED TO BEAUTIFY

FOCUS ON THE DETAILS

Our LED specialty lights were developed to provide efficient, versatile solutions for niche applications and specialized effects. While they can improve both ambiance and safety, they can also provide designers with new opportunities to enhance landscape details.

PE

The PE's low profile allows it to be concealed in even the sparsest landscapes to keep the focus where it's needed.



DIMENSIONS

Overall height: 9.1"/23.1 cm
Exposed diameter: 6"/15.2 cm

| DESCRIPTION | CODE |
|-------------|-------------------------|
| FIXTURE | PE |
| ZD OPTION | ZD |
| LEDs | 3LED, 6LED, 9LED |
| GRATE | RG (Ring), CW (Cowling) |

FINISHES

Composite



CB

ORDERING EXAMPLE: ▶ **PE-3LED-RG-CB** = FIXTURE-LED-GRATE-FINISH

| SPECIFICATIONS | 3 LED | 6 LED | 9 LED |
|---------------------------------|---------|-----------|-----------|
| HALOGEN LUMEN OUTPUT EQUIVALENT | 10 watt | 20 watt | 35 watt |
| WATTS USED/VA TOTAL | 4.2/4.5 | 10.1/13.5 | 11.2/13.5 |
| MAX LUMENS | 127 | 264 | 320 |

KG

The KG subterranean fixture has a low-profile flat metal top in a variety of color options. The LED module inside can be aimed to highlight any feature for dramatic special effects.



DIMENSIONS

Height: 8.9"/22.6 cm
Diameter: 2.4"/5.9 cm

| DESCRIPTION | CODE |
|-------------|------------------|
| FIXTURE | KG |
| ZD OPTION | ZD |
| LEDs | 3LED, 6LED, 9LED |

FINISHES

Metals



AB*
on brass



AT*
on brass



NP*

Powder Coat



WG



FW



AL



BZ



DG



WI



VF



SB



FB

ORDERING EXAMPLE: ▶ **KG-9LED-FB** = FIXTURE-LED-FINISH

| SPECIFICATIONS | 1 LED | 3LED |
|---------------------------------|---------|---------|
| HALOGEN LUMEN OUTPUT EQUIVALENT | 10 watt | 20 watt |
| WATTS USED/VA TOTAL | 2.0/2.4 | 4.2/4.5 |
| MAX LUMENS | 50 | 127 |

NOTE: Useful LED Life L70 (Avg): 50,000 hrs. Input Voltage: 10 to 15 V.

* May require longer lead time

FC

Ring (RG) Cowling (CW)



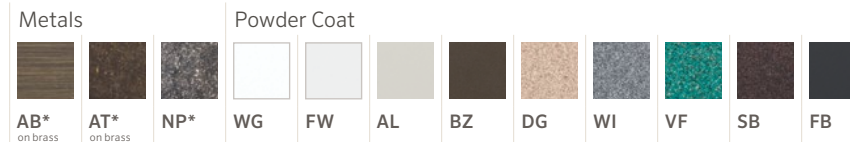
DIMENSIONS

Height: 9.7"/24.6 cm
Diameter: 3"/7.6 cm

The FC well light features an innovative installation sleeve for easy removal and adjustments. It has three grate options and is available with ZD Technology for Luxor-based systems.

| DESCRIPTION | CODE |
|-------------|---------------------------------------|
| FIXTURE | FC |
| ZD OPTION | ZD |
| LEDs | 1LED, 3LED, 6LED, 9LED |
| GRATE | LV (Louver) , RG (Ring), CW (Cowling) |

FINISHES



ORDERING EXAMPLE: ▶ **FC-9LED-RG-BS** = FIXTURE-LED-GRATE-FINISH

| SPECIFICATIONS | 1 LED | 3 LED | 6 LED | 9 LED |
|---------------------------------|---------|---------|-----------|-----------|
| HALOGEN LUMEN OUTPUT EQUIVALENT | 10 watt | 20 watt | 40watt | 50 watt |
| WATTS USED/VA TOTAL | 2.0/2.4 | 4.2/4.5 | 10.1/13.5 | 11.2/13.5 |
| MAX LUMENS | 59 | 162 | 328 | 334 |

LL



DIMENSIONS

Exposed diameter: .3"/8.4 cm
Overall height: 5.29"/13.44 cm
Overall length: 6.4"/16.3 cm
Base width: 5.38"/13.7 cm

Fountains and water features are the focal point of many upscale landscapes. The LL is a submersible fixture that illuminates from under the water to give a soft, yet radiant glow.

| DESCRIPTION | CODE |
|-------------|------------------------|
| FIXTURE | LL |
| ZD OPTION | ZD |
| LEDs | 1LED, 3LED, 6LED, 9LED |

FINISHES

| Metals | OPTIONAL 100 FOOT LONG LEAD AVAILABLE. ORDERING CODE: 100 |
|--------|---|
| BS | |

ORDERING EXAMPLE: ▶ **LL-6LED-BS-100** = FIXTURE-LED-FINISH-LONG LEAD

| SPECIFICATIONS | 1 LED | 3 LED | 6 LED | 9 LED |
|---------------------------------|---------|---------|-----------|-----------|
| HALOGEN LUMEN OUTPUT EQUIVALENT | 10 watt | 20 watt | 35 watt | 50 watt |
| WATTS USED/VA TOTAL | 2.0/2.4 | 4.2/4.5 | 10.1/13.5 | 11.2/13.5 |
| MAX LUMENS | - | 133 | 282 | 378 |

NOTE: Useful LED Life L70 (Avg): 50,000 hrs. Input Voltage: 10 to 15 V.

** May require longer lead time*

Accessories

DESIGNED TO EMBELLISH





LED REPLACEMENT KITS



LED OPTICS



BEAM ANGLE LENS



SPLICING



VARIABLE HEIGHT RISER



RISERS

ZD LED REPLACEMENT KITS

| Catalog No | Description |
|-------------|-------------------------------------|
| ZD1LEDPLKIT | ZD 1 LED Path Light Replacement Kit |
| ZD1LEDULKIT | ZD 1 LED Up Light Replacement Kit† |
| ZD3LEDPLKIT | ZD 3 LED Path Light Replacement Kit |
| ZD3LEDULKIT | ZD 3 LED Up Light Replacement Kit† |
| ZD6LEDULKIT | ZD 6 LED Up Light Replacement Kit† |
| ZD9LEDULKIT | ZD 9 LED Up Light Replacement Kit† |
| 755901 | ZD 1 LED Board for LF* |

Includes Filters, Screws, Reflector and LED Board

LED REPLACEMENT KITS

| Catalog No | Description |
|------------|----------------------------------|
| 1LEDPLKIT | 1 LED Path Light Replacement Kit |
| 1LEDULKIT | 1 LED Up Light Replacement Kit† |
| 3LEDPLKIT | 3 LED Path Light Replacement Kit |
| 3LEDULKIT | 3 LED Up Light Replacement Kit† |
| 6LEDULKIT | 6 LED Up Light Replacement Kit† |
| 9LEDULKIT | 9 LED Up Light Replacement Kit† |
| 755902 | 1 LED Board for LF* |

Includes Filters, Screws, Reflector and LED Board

LED OPTICS KITS

| Catalog No | Description |
|--------------|-----------------------------------|
| 1LEDOPTICKIT | Optics Kit for 1 LED Board |
| 3LEDOPTICKIT | Optics Kit for 3 LED Board |
| 9LEDOPTICKIT | Optics Kit for 6 and 9 LED Boards |

LED BEAM ANGLE LENSES

| Catalog No | Description |
|------------|--------------------------------------|
| 1LEDFLENS | 1 LED Flood Lens, 30°-32° |
| 1LEDWFLENS | 1 LED Wide Flood Lens, 56°-58° |
| 3LEDFLENS | 3 LED Flood Lens, 30°-32° |
| 3LEDWFLENS | 3 LED Wide Flood Lens, 56°-58° |
| 9LEDFLENS | 6 and 9 LED Flood Lens, 30°-32° |
| 9LEDWFLENS | 6 and 9 LED Wide Flood Lens, 56°-58° |

SPLICING OPTIONS

| Catalog No | Description |
|------------|--|
| DBRY100 | 100 tubes loose in box, plus inner box with 100 wire nuts (100 bulk) |
| DBRY2X25 | Two tubes and wire nuts in a plastic bag (2 pack of 25 units) |

RISER HEIGHT OPTIONS

| Catalog No | Description |
|---------------|---|
| 6R-XX** | 6" Aluminum Riser |
| 8R-XX** | 8" Aluminum Riser |
| 12R-XX** | 12" Aluminum Riser |
| 18R-XX** | 18" Aluminum Riser |
| 6R-COUP-XX** | 6" Aluminum Riser w/Coupler |
| 8R-COUP-XX** | 8" Aluminum Riser w/Coupler |
| 12R-COUP-XX** | 12" Aluminum Riser w/Coupler |
| 18R-COUP-XX** | 18" Aluminum Riser w/Coupler |
| 24R-COUP-XX** | 24" Aluminum Riser w/Coupler |
| 6R-90-XX** | 6" Aluminum Riser w/90° Coupler |
| 8R-90-XX** | 8" Aluminum Riser w/90° Coupler |
| 12R-90-XX** | 12" Aluminum Riser w/90° Coupler |
| 18R-90-XX** | 18" Aluminum Riser w/90° Coupler |
| 24R-90-XX** | 24" Aluminum Riser w/90° Coupler |
| 8R-GT-CU | 8" Copper Riser ½" NPT brass threads |
| 8R-GT-XX** | 8" Copper Riser ½" NPT brass threads |
| 8R-GT-AB* | 8" Copper Riser ½" NPT brass threads |
| 8R-GT-AT* | 8" Copper Riser ½" NPT brass threads |
| 8R-GT-NP* | 8" Copper Riser ½" NPT brass threads |
| 12R-GT-CU | 12" Copper Riser ½" NPT brass threads |
| 12R-GT-XX** | 12" Copper Riser ½" NPT brass threads |
| 12R-GT-AB* | 12" Copper Riser ½" NPT brass threads |
| 12R-GT-AT* | 12" Copper Riser ½" NPT brass threads |
| 12R-GT-NP* | 12" Copper Riser ½" NPT brass threads |
| 18R-GT-CU | 18" Copper Riser ½" NPT brass threads |
| 18R-GT-XX** | 18" Copper Riser ½" NPT brass threads |
| 18R-GT-AB* | 18" Copper Riser ½" NPT brass threads |
| 18R-GT-AT* | 18" Copper Riser ½" NPT brass threads |
| 18R-GT-NP* | 18" Copper Riser ½" NPT brass threads |
| 24R-GT-CU | 24" Copper Riser ½" NPT brass threads |
| 24R-GT-XX** | 24" Copper Riser ½" NPT brass threads |
| 24R-GT-AB* | 24" Copper Riser ½" NPT brass threads |
| 24R-GT-AT* | 24" Copper Riser ½" NPT brass threads |
| 24R-GT-NP* | 24" Copper Riser ½" NPT brass threads |
| VHRUL | Variable Height Riser for Up Light, Extends 0"-7" |

†Can be used in down lights *Board Only

*May require longer lead time ** Denotes powder coat finish



POST MOUNT



VERSA BOX



SPIKES

MOUNTING OPTIONS

| Catalog No | Description |
|-------------------|-------------------|
| Post Mount | |
| PM-BS | Post Mount |
| PM-NP* | Post Mount |
| PM-XX** | Post Mount |
| PDM-BS | Deck Mount for PM |
| PDM-NP* | Deck Mount for PM |
| PDM-XX** | Deck Mount for PM |

Versa Box

| | |
|-------------|------------------------|
| VB-050-BS | VersaBox for ½" Thread |
| VB-050-NP* | VersaBox for ½" Thread |
| VB-050-AB* | VersaBox for ½" Thread |
| VB-050-AT* | VersaBox for ½" Thread |
| VB-050-XX** | VersaBox for ½" Thread |

Mini J-Box

| | |
|-------------|--------------------------|
| MJ-050-XX** | Mini J-box for ½" Thread |
|-------------|--------------------------|

†Can be used in down lights *Board Only *May require longer lead time ** Denotes powder coat finish

MOUNTING OPTIONS

| Catalog No | Description |
|----------------------|------------------------|
| TreeBox Mount | |
| TB-XX** | TreeBox with ½" thread |

Spikes

| | |
|--------------|------------------|
| 753900 | Super Slot Spike |
| 250015840000 | Long Slot Spike |
| 250011560000 | CDS Spike |
| SJ-BS | Super J-Box |
| SJ-NP* | Super J-Box |
| SJ-XX** | Super J-Box |

Wall Mount

| | |
|---------|----------------------------------|
| POBRKT | PO Mounting Bracket |
| WM-XX** | Wall Mount with Aluminum Knuckle |

STATEMENT OF WARRANTY

Hunter Industries Incorporated ("Hunter") warrants FX Luminaire ("FX") Transformers to be free of defects in materials or workmanship under normal use for a period of ten (10) years from the original date of installation. Hunter warrants FX Low Voltage Lighting Fixtures to be free of defects in materials or workmanship under normal use for a period of three (3) years from the original date of installation. Hunter extends the warranty on FX Fixtures to ten (10) years from the original date of installation when both FX Fixtures and Transformers are installed on the same project exclusive of any competitor's product. Hunter warrants FX LED Fixtures to be free of defects in materials or workmanship under normal use for a period of ten (10) years from the original date of installation. If a defect in a FX product is discovered during the applicable warranty period, Hunter will repair or replace, at its option, the product or the defective part. This warranty does not extend to repairs, adjustments, or replacement of a FX product or part that results from misuse, negligence, alteration, modification, tampering, or improper installation and/or maintenance of the product. This warranty extends only to the original installer of the FX product. If a defect arises in a FX product or part during the warranty period, you should contact your local FX Authorized Distributor.

FX LUMINAIRE'S OBLIGATION TO REPAIR OR REPLACE ITS PRODUCTS AS SET FORTH ABOVE IS THE SOLE AND EXCLUSIVE WARRANTY SET FORTH BY FX. THERE ARE NO OTHER WARRANTIES, EXPRESSED OR IMPLIED, INCLUDING WARRANTIES OF MERCHANTABILITY AND FITNESS FOR A PARTICULAR PURPOSE. FX WILL NOT BE LIABLE TO DISTRIBUTOR OR ANY OTHER PARTY IN STRICT LIABILITY, TORT, CONTRACT, OR ANY OTHER MANNER FOR DAMAGES CAUSED OR CLAIMED TO BE CAUSED AS A RESULT OF ANY DESIGN OR DEFECT IN FX LUMINAIRE'S PRODUCTS, OR FOR ANY SPECIAL, INCIDENTAL, CONSEQUENTIAL, OR EXEMPLARY DAMAGES OF ANY NATURE, INCLUDING WITHOUT LIMITATION LOST BUSINESS OR PROFITS. NOTWITHSTANDING THE FOREGOING, IF FOR ANY REASON FX IS FOUND TO BE LIABLE IN NO EVENT SHALL FX'S LIABILITY EXCEED THE PRICE OF THE PRODUCT WHICH GIVES RISE TO THE CLAIM, LOSS, OR DAMAGE.

Any FX Luminaire product being returned must receive a Return Goods Authorization number from Hunter Customer Service prior to sending product back. All returned product is subject to a 25% restocking fee. Product must be returned within six (6) months of order date. All product returned must be in its original packaging, be undamaged and unused and never energized. Product not meeting these criteria will be returned to original sender. Hunter Industries is not responsible for product loss or damage during return transit to RMA location.

If you have any questions concerning the warranty or its application, please write to: Customer Service Department, FX Luminaire, 1940 Diamond Street, San Marcos, CA 92078, U.S.A.

FXLuminaire.

Our mission is to create the most energy efficient lighting products in the world while maintaining the highest level of quality and reliability. In every instance we will back our innovations with the unwavering support our customers need to succeed.



Gregory R. Hunter, President of Hunter Industries

Website fxl.com | Customer Support 760-744-5240 | Technical Service 760-591-7383

This brochure was printed on Forest Stewardship Council® (FSC) certified paper with soy inks. The FSC is an international organization established to promote the responsible management of the world's forests.

© 2014 Hunter Industries Incorporated  Please recycle.

FXLIT-018 F 1/14

